



**Water Monitoring Result at C1 - HKCEC Extension
Mid-Flood Tide**

Date	Time	Weather Condition	Sampling Depth		Water Temperature			pH			Salinity			DO Saturation		DO		Turbidity		Suspended Solids				
					°C			-			ppt			%		mg/L		NTU		mg/L				
			m	Value	Average	Value	Average	Value	Average	Value	Average	Value	Average	Value	Average	Value	Average	Value	Average	Value	Average	Value	Average	
28/11/18	10:25	Cloudy	Middle	3.0	22.50	22.50	22.50	7.37	7.37	7.37	32.69	32.69	32.69	72.5	72.0	72.3	5.20	5.15	5.18	9.37	9.41	9.40	10	9.50
	10:27		Middle	3.0	22.50	22.50	22.50	7.37	7.37	7.37	32.69	32.69	32.69	72.4	72.4	72.3	5.18	5.19	5.18	9.41	9.42	9.41	9	
30/11/18	14:50	Fine	Middle	3.0	22.70	22.70	22.70	7.39	7.39	7.40	33.04	33.04	33.04	71.4	72.5	72.8	5.09	5.17	5.19	6.52	6.46	6.47	7	7.50
	14:52		Middle	3.0	22.70	22.70	22.70	7.40	7.40	7.40	33.04	33.04	33.04	73.6	73.5	72.8	5.25	5.24	5.19	6.46	6.45	6.45	8	
3/12/18	15:05	Fine	Middle	3.0	23.70	23.70	23.70	7.60	7.60	7.60	32.84	32.84	32.84	72.1	72.1	72.1	5.06	5.05	5.05	4.23	4.23	4.23	5	4.50
	15:07		Middle	3.0	23.70	23.70	23.70	7.60	7.60	7.60	32.84	32.84	32.84	72.0	72.1	72.1	5.04	5.05	5.05	4.23	4.23	4.23	4	
5/12/18	17:15	Cloudy	Middle	3.0	23.20	23.20	23.20	7.74	7.74	7.74	32.90	32.90	32.90	69.0	69.5	69.8	4.89	4.91	4.93	5.78	5.80	5.26	4	4.50
	17:17		Middle	3.0	23.20	23.20	23.20	7.74	7.74	7.74	32.90	32.90	32.90	70.2	70.3	69.8	4.96	4.97	4.93	4.72	4.72	5.26	5	
7/12/18	15:50	Cloudy	Middle	2.5	22.60	22.60	22.55	7.80	7.80	7.80	33.18	33.18	33.18	73.2	73.1	73.0	5.23	5.23	5.22	5.60	5.59	5.59	5	5.00
	15:52		Middle	2.5	22.50	22.50	22.55	7.80	7.80	7.80	33.18	33.18	33.18	72.9	72.8	73.0	5.21	5.21	5.22	5.58	5.59	5.59	5	
10/12/18	10:50	Cloudy	Middle	3.0	21.40	21.40	21.35	7.30	7.30	7.30	33.75	33.75	33.75	71.1	72.4	72.7	5.17	5.27	5.29	7.33	7.32	7.32	7	7.00
	10:52		Middle	3.0	21.30	21.30	21.35	7.30	7.30	7.30	33.76	33.76	33.76	73.6	73.7	72.7	5.36	5.37	5.29	7.32	7.31	7.32	7	
12/12/18	9:40	Fine	Middle	2.5	20.30	20.30	20.20	7.19	7.19	7.20	33.76	33.76	33.77	63.6	64.5	65.0	4.72	4.79	4.83	6.46	6.46	6.47	4	5.00
	9:42		Middle	2.5	20.10	20.10	20.20	7.20	7.20	7.20	33.77	33.77	33.77	65.9	66.1	65.0	4.90	4.92	4.83	6.46	6.48	6.47	6	
14/12/18	13:35	Cloudy	Middle	3.0	20.60	20.60	20.60	7.11	7.11	7.11	33.91	33.91	33.91	71.4	72.0	71.7	5.26	5.30	5.28	6.45	6.44	6.41	4	3.50
	13:37		Middle	3.0	20.60	20.60	20.60	7.11	7.11	7.11	33.91	33.91	33.91	71.6	71.6	71.7	5.27	5.27	5.28	6.37	6.38	6.41	3	
17/12/18	14:34	Fine	Middle	2.5	20.70	20.70	20.70	7.20	7.20	7.21	33.76	33.76	33.77	57.6	57.6	57.7	4.24	4.24	4.24	4.81	4.71	4.72	4	4.00
	14:36		Middle	2.5	20.70	20.70	20.70	7.21	7.21	7.21	33.77	33.77	33.77	57.4	58.0	57.7	4.22	4.27	4.24	4.67	4.69	4.72	4	
19/12/18	15:23	Fine	Middle	2.5	20.70	20.70	20.70	7.37	7.37	7.37	33.61	33.61	33.61	62.2	61.8	61.6	4.58	4.55	4.54	5.04	5.19	5.18	6	6.00
	15:25		Middle	2.5	20.70	20.70	20.70	7.37	7.37	7.37	33.61	33.61	33.61	61.4	61.1	61.6	4.53	4.50	4.54	5.20	5.29	5.18	6	
21/12/18	16:55	Fine	Middle	3.0	21.80	21.80	21.80	7.57	7.57	7.57	33.61	33.61	33.61	73.1	73.9	74.4	5.28	5.35	5.39	4.96	4.98	4.98	4	4.00
	16:57		Middle	3.0	21.80	21.80	21.80	7.57	7.57	7.57	33.61	33.61	33.61	75.5	75.0	74.4	5.45	5.46	5.39	4.99	4.99	4.98	4	
24/12/18	8:50	Cloudy	Middle	3.0	20.70	20.70	20.70	7.38	7.38	7.38	33.59	33.59	33.59	69.7	69.7	69.3	5.14	5.13	5.11	5.82	5.82	5.84	6	6.00
	8:52		Middle	3.0	20.70	20.70	20.70	7.38	7.38	7.38	33.59	33.59	33.59	69.0	68.9	69.3	5.09	5.08	5.11	5.82	5.89	5.84	6	

Remarks:
Single underline denotes exceedance over Action Level.
Double underline denotes exceedance over Limit Level.



**Water Monitoring Result at P1 - HKCEC Phase I
Mid-Flood Tide**

Date	Time	Weather Condition	Sampling Depth		Water Temperature			pH			Salinity			DO Saturation			DO			Turbidity			Suspended Solids	
			m		°C		-		ppt		%		mg/L		NTU		mg/L							
					Value	Average	Value	Average	Value	Average	Value	Average	Value	Average	Value	Average	Value	Average	Value	Average				
28/11/18	10:00	Cloudy	Middle	3.0	22.60	22.60	22.65	7.15	7.15	7.17	32.62	32.62	32.62	69.2	69.3	69.1	4.95	4.96	4.94	8.78	8.82	8.79	7	7.00
	10:05		Middle	3.0	22.70	22.70		7.18	7.18		32.61	32.61		68.8	68.9		4.92	4.92		8.79	8.78		7	
30/11/18	14:30	Fine	Middle	3.0	23.20	23.20	23.25	7.24	7.24	7.25	32.91	32.91	32.91	74.6	75.0	75.0	5.27	5.30	5.30	5.52	5.53	5.55	5	5.50
	14:32		Middle	3.0	23.30	23.30		7.25	7.25		32.91	32.91		75.3	75.2		5.32	5.31		5.57	5.59		6	
3/12/18	14:45	Fine	Middle	3.0	24.20	24.20	24.30	7.47	7.47	7.48	32.93	32.93	32.93	73.6	72.6	73.6	5.10	5.03	5.10	4.49	4.54	4.54	4	4.00
	14:47		Middle	3.0	24.40	24.40		7.49	7.49		32.93	32.93		74.0	74.2		5.12	5.14		4.55	4.56		4	
5/12/18	16:55	Cloudy	Middle	3.0	23.30	23.30	23.35	7.70	7.70	7.70	32.93	32.93	32.93	71.0	71.3	70.8	5.02	5.03	4.99	2.79	2.84	2.83	3	3.00
	16:57		Middle	3.0	23.40	23.40		7.69	7.69		32.93	32.93		70.0	70.7		4.94	4.98		2.84	2.85		3	
7/12/18	15:30	Cloudy	Middle	2.5	22.20	22.20	22.15	7.74	7.74	7.75	33.33	33.33	33.34	74.0	74.3	74.3	5.32	5.34	5.34	6.13	6.14	6.14	5	4.50
	15:32		Middle	2.5	22.10	22.10		7.76	7.76		33.34	33.34		74.4	74.3		5.34	5.34		6.14	6.14		4	
10/12/18	10:30	Cloudy	Middle	3.0	20.80	20.80	20.75	7.28	7.28	7.29	33.56	33.56	33.56	74.2	74.7	74.7	5.46	5.50	5.50	6.35	6.38	6.39	5	5.50
	10:32		Middle	3.0	20.70	20.70		7.29	7.29		33.56	33.56		74.9	74.9		5.52	5.52		6.40	6.42		6	
12/12/18	9:20	Fine	Middle	2.5	20.00	20.00	20.00	7.03	7.03	7.03	33.46	33.46	33.46	64.6	66.6	66.1	4.83	5.00	4.96	5.71	5.76	5.73	4	4.50
	9:22		Middle	2.5	20.00	20.00		7.03	7.03		33.46	33.46		66.8	66.5		5.01	4.99		5.71	5.72		5	
14/12/18	13:15	Cloudy	Middle	3.0	20.20	20.20	20.15	6.85	6.85	6.87	33.47	33.47	33.47	69.4	69.8	70.3	5.16	5.20	5.23	5.46	5.43	5.43	5	5.00
	13:17		Middle	3.0	20.10	20.10		6.89	6.89		33.46	33.46		70.9	70.9		5.28	5.28		5.42	5.41		5	
17/12/18	14:18	Fine	Middle	2.5	21.10	21.10	21.15	7.02	7.02	7.03	34.03	34.03	33.97	63.1	63.4	63.5	4.59	4.61	4.62	3.92	3.93	3.97	4	4.00
	14:20		Middle	2.5	21.20	21.20		7.04	7.04		33.90	33.90		63.9	63.7		4.65	4.63		3.95	4.09		4	
19/12/18	15:07	Fine	Middle	2.5	21.00	21.00	21.00	7.23	7.23	7.25	33.83	33.83	33.82	61.6	61.6	61.6	4.50	4.51	4.51	4.29	4.23	4.27	6	6.00
	15:09		Middle	2.5	21.00	21.00		7.27	7.27		33.80	33.80		61.6	61.6		4.51	4.50		4.28	4.29		6	
21/12/18	16:35	Fine	Middle	3.0	22.50	22.50	22.50	7.45	7.45	7.47	33.74	33.74	33.74	75.3	75.2	75.3	5.36	5.36	5.36	4.44	4.40	4.38	6	5.50
	16:37		Middle	3.0	22.50	22.50		7.48	7.48		33.74	33.74		75.1	75.4		5.35	5.37		4.35	4.32		5	
24/12/18	8:30	Cloudy	Middle	3.0	20.40	20.40	20.35	7.36	7.36	7.37	33.54	33.54	33.55	67.8	68.4	68.7	5.03	5.08	5.10	4.31	4.31	4.31	2	2.00
	8:32		Middle	3.0	20.30	20.30		7.37	7.37		33.55	33.55		69.3	69.1		5.14	5.13		4.31	4.32		2	

Remarks:
Single underline denotes exceedance over Action Level.
Double underline denotes exceedance over Limit Level.



**Water Monitoring Result at P3 - APA
Mid-Flood Tide**

Date	Time	Weather Condition	Sampling Depth		Water Temperature			pH			Salinity			DO Saturation			DO			Turbidity			Suspended Solids	
					°C			-			ppt			%			mg/L			NTU			mg/L	
					Value	Average		Value	Average		Value	Average		Value	Average		Value	Average		Value	Average		Value	Average
28/11/18	10:10	Cloudy	Middle	3.0	22.60	22.60	22.60	7.27	7.27	7.28	32.66	32.66	32.66	67.1	67.0	66.9	4.80	4.79	4.79	7.96	7.97	7.97	9	8.50
	10:12		Middle	3.0	22.60	22.60		7.29	7.29		32.66	32.66		66.5	66.8		4.76	4.79		7.97	7.97		8	
30/11/18	14:35	Fine	Middle	3.0	23.00	23.00	23.00	7.29	7.29	7.30	32.91	32.91	32.91	73.0	73.0	73.2	5.18	5.18	5.19	5.40	5.38	5.39	5	5.00
	14:37		Middle	3.0	23.00	23.00		7.30	7.30		32.90	32.90		73.5	73.3		5.21	5.20		5.38	5.39		5	
3/12/18	14:50	Fine	Middle	3.0	23.70	23.70	23.75	7.50	7.50	7.51	32.87	32.87	32.88	70.4	70.4	70.4	4.93	4.93	4.93	3.92	3.93	3.93	4	4.00
	14:52		Middle	3.0	23.80	23.80		7.52	7.52		32.88	32.88		70.4	70.5		4.93	4.94		3.94	3.94		4	
5/12/18	17:00	Cloudy	Middle	3.0	23.20	23.20	23.25	7.73	7.73	7.73	32.90	32.90	32.91	67.8	68.6	68.7	4.79	4.86	4.86	3.13	3.13	3.12	5	5.00
	17:02		Middle	3.0	23.30	23.30		7.73	7.73		32.91	32.91		69.3	69.2		4.89	4.88		3.12	3.11		5	
7/12/18	15:35	Cloudy	Middle	2.5	22.20	22.20	22.15	7.77	7.77	7.77	33.29	33.29	33.29	74.1	74.4	74.2	5.33	5.34	5.33	6.10	6.11	6.12	4	4.00
	15:37		Middle	2.5	22.10	22.10		7.77	7.77		33.29	33.29		74.1	74.0		5.33	5.32		6.12	6.13		4	
10/12/18	10:35	Cloudy	Middle	3.0	21.10	21.10	21.10	7.30	7.30	7.30	33.60	33.60	33.60	73.2	73.1	73.2	5.35	5.35	5.35	6.07	6.09	6.09	4	4.00
	10:37		Middle	3.0	21.10	21.10		7.30	7.30		33.60	33.60		73.2	73.2		5.35	5.36		6.10	6.10		4	
12/12/18	9:25	Fine	Middle	2.5	19.80	19.80	19.70	7.07	7.07	7.08	33.73	33.73	33.74	64.8	65.3	65.3	4.85	4.90	4.90	5.71	5.62	5.68	5	5.00
	9:27		Middle	2.5	19.60	19.60		7.09	7.09		33.74	33.74		65.2	65.8		4.90	4.94		5.67	5.71		5	
14/12/18	13:20	Cloudy	Middle	3.0	20.40	20.40	20.40	6.96	6.96	6.98	33.84	33.84	33.84	71.9	71.9	71.9	5.32	5.32	5.32	5.19	5.19	5.18	3	3.00
	13:22		Middle	3.0	20.40	20.40		6.99	6.99		33.83	33.83		72.2	71.5		5.34	5.29		5.18	5.16		3	
17/12/18	14:22	Fine	Middle	2.5	20.60	20.60	20.65	7.05	7.05	7.07	33.88	33.88	33.86	64.7	64.0	63.4	4.76	4.71	4.67	3.91	3.90	3.90	4	5.00
	14:24		Middle	2.5	20.70	20.70		7.08	7.08		33.84	33.84		62.9	62.0		4.63	4.56		3.90	3.90		6	
19/12/18	15:11	Fine	Middle	2.5	20.50	20.50	20.55	7.28	7.28	7.29	33.20	33.20	33.45	60.0	59.3	60.0	4.42	4.38	4.43	4.05	4.09	4.08	4	4.00
	15:13		Middle	2.5	20.60	20.60		7.30	7.30		33.69	33.69		60.1	60.7		4.43	4.48		4.10	4.07		4	
21/12/18	16:40	Fine	Middle	3.0	21.80	21.80	21.85	7.50	7.50	7.51	33.67	33.67	33.67	73.4	73.7	73.4	5.28	5.30	5.28	4.23	4.23	4.22	6	6.00
	16:42		Middle	3.0	21.90	21.90		7.51	7.51		33.67	33.67		72.9	73.4		5.25	5.28		4.22	4.21		6	
24/12/18	8:35	Cloudy	Middle	3.0	20.40	20.40	20.40	7.37	7.37	7.37	33.55	33.55	33.55	69.1	69.2	68.9	5.12	5.13	5.11	4.26	4.24	4.25	3	3.50
	8:37		Middle	3.0	20.40	20.40		7.37	7.37		33.55	33.55		68.6	68.7		5.08	5.09		4.23	4.28		4	

Remarks:
Single underline denotes exceedance over Action Level.
Double underline denotes exceedance over Limit Level.



**Water Monitoring Result at P4 - SOC
Mid-Flood Tide**

Date	Time	Weather Condition	Sampling Depth		Water Temperature			pH			Salinity			DO Saturation			DO			Turbidity			Suspended Solids	
			m		°C		-		ppt		%		mg/L		NTU		mg/L							
					Value	Average	Value	Average	Value	Average	Value	Average	Value	Average	Value	Average	Value	Average	Value	Average				
28/11/18	10:15	Cloudy	Middle	3.0	22.70	22.70	22.70	7.32	7.32	7.33	32.68	32.68	32.68	65.0	66.1	66.2	4.68	4.72	4.74	8.20	8.17	8.18	9	8.50
	10:17		Middle	3.0	22.70	22.70		7.34	7.34		32.68	32.68		66.9	66.9		4.78	4.78		8.18	8.18		8	
30/11/18	14:40	Fine	Middle	3.0	22.80	22.80	22.80	7.33	7.33	7.34	33.03	33.03	33.02	74.4	74.3	74.2	5.27	5.28	5.27	5.27	5.24	5.30	6	6.00
	14:42		Middle	3.0	22.80	22.80		7.34	7.34		33.01	33.01		74.1	74.0		5.27	5.26		5.35	5.35		6	
3/12/18	14:55	Fine	Middle	3.0	23.60	23.60	23.60	7.55	7.55	7.56	32.89	32.89	32.89	69.7	69.9	70.2	4.89	4.89	4.92	3.77	3.77	3.80	6	6.00
	14:57		Middle	3.0	23.60	23.60		7.56	7.56		32.88	32.88		70.7	70.6		4.96	4.95		3.81	3.83		6	
5/12/18	17:05	Cloudy	Middle	3.0	23.30	23.30	23.30	7.73	7.73	7.73	32.90	32.90	32.90	67.3	68.8	68.8	4.76	4.86	4.86	5.93	5.84	5.87	5	5.00
	17:07		Middle	3.0	23.30	23.30		7.73	7.73		32.90	32.90		69.6	69.6		4.91	4.91		5.85	5.87		5	
7/12/18	15:40	Cloudy	Middle	2.5	22.10	22.10	22.10	7.76	7.76	7.76	33.28	33.28	33.28	73.4	73.7	73.7	5.28	5.36	5.32	6.12	6.12	6.11	2	2.50
	15:42		Middle	2.5	22.10	22.10		7.76	7.76		33.28	33.28		73.9	73.9		5.31	5.32		6.11	6.10		3	
10/12/18	10:40	Cloudy	Middle	3.0	21.20	21.20	21.15	7.30	7.30	7.30	33.72	33.72	33.72	71.7	72.6	73.3	5.19	5.32	5.34	7.24	7.28	7.27	7	7.00
	10:42		Middle	3.0	21.10	21.10		7.30	7.30		33.72	33.72		74.4	74.4		5.43	5.43		7.28	7.28		7	
12/12/18	9:30	Fine	Middle	2.5	19.70	19.70	19.65	7.12	7.12	7.13	33.75	33.75	33.76	63.1	63.6	64.0	4.73	4.77	4.80	6.27	6.14	6.16	6	7.00
	9:32		Middle	2.5	19.60	19.60		7.13	7.13		33.76	33.76		64.6	64.5		4.85	4.84		6.10	6.12		8	
14/12/18	13:25	Cloudy	Middle	3.0	20.40	20.40	20.40	6.99	6.99	6.99	33.89	33.89	33.89	72.0	72.2	71.6	5.32	5.34	5.29	5.22	5.20	5.21	5	4.50
	13:27		Middle	3.0	20.40	20.40		6.99	6.99		33.89	33.89		71.3	70.7		5.28	5.23		5.20	5.20		4	
17/12/18	14:24	Fine	Middle	2.5	20.50	20.50	20.55	7.11	7.11	7.12	33.85	33.85	33.84	58.2	58.0	58.2	4.29	4.28	4.30	5.15	5.18	5.16	4	4.50
	14:26		Middle	2.5	20.60	20.60		7.13	7.13		33.83	33.83		58.3	58.4		4.30	4.31		5.17	5.15		5	
19/12/18	15:15	Fine	Middle	2.5	20.60	20.60	20.60	7.33	7.33	7.34	33.68	33.68	33.68	56.2	56.9	56.8	4.14	4.16	4.21	4.42	4.38	4.35	5	4.50
	15:17		Middle	2.5	20.60	20.60		7.34	7.34		33.68	33.68		56.8	57.3		4.29	4.23		4.32	4.28		4	
21/12/18	16:45	Fine	Middle	3.0	21.70	21.70	21.75	7.53	7.53	7.53	33.67	33.67	33.67	73.6	73.4	73.7	5.31	5.30	5.32	4.11	4.11	4.13	5	4.50
	16:47		Middle	3.0	21.80	21.80		7.53	7.53		33.67	33.67		73.9	73.8		5.33	5.33		4.16	4.12		4	
24/12/18	8:40	Cloudy	Middle	3.0	20.70	20.70	20.75	7.38	7.38	7.39	33.59	33.59	33.59	69.5	70.4	70.2	5.12	5.19	5.17	3.89	3.85	3.89	6	5.50
	8:42		Middle	3.0	20.80	20.80		7.39	7.39		33.59	33.59		70.4	70.3		5.19	5.18		3.90	3.90		5	

Remarks:
Single underline denotes exceedance over Action Level.
Double underline denotes exceedance over Limit Level.



**Water Monitoring Result at P5 - WCT / RT / IT
Mid-Flood Tide**

Date	Time	Weather Condition	Sampling Depth		Water Temperature			pH			Salinity			DO Saturation			DO			Turbidity			Suspended Solids	
					°C		-		ppt		%		mg/L		NTU		mg/L							
			m	Value	Average	Value	Average	Value	Average	Value	Average	Value	Average	Value	Average	Value	Average	Value	Average	Value	Average	Value	Average	
28/11/18	10:20	Cloudy	Middle	3.0	22.70	22.70	22.70	7.35	7.35	7.36	32.64	32.64	32.66	68.2	68.6	68.8	4.87	4.92	4.92	8.40	8.54	8.54	9	9.00
	10:22		Middle	3.0	22.70	22.70		7.36	7.36		32.68	32.68		69.2	69.1		4.95	4.94		8.59	8.62		9	
30/11/18	14:45	Fine	Middle	3.0	22.60	22.60	22.60	7.36	7.36	7.36	33.04	33.04	33.04	70.7	71.2	71.3	5.05	5.09	5.09	6.80	6.81	6.81	7	6.50
	14:47		Middle	3.0	22.60	22.60		7.36	7.36		33.03	33.03		71.5	71.7		5.11	5.12		6.84	6.80		6	
3/12/18	15:00	Fine	Middle	3.0	23.60	23.60	23.60	7.58	7.58	7.58	32.94	32.94	32.94	68.7	69.1	69.4	4.82	4.85	4.87	4.56	4.55	4.55	7	7.00
	15:02		Middle	3.0	23.60	23.60		7.58	7.58		32.93	32.93		69.8	69.8		4.90	4.90		4.53	4.54		7	
5/12/18	17:10	Cloudy	Middle	3.0	23.30	23.30	23.30	7.73	7.73	7.73	32.87	32.87	32.87	68.0	68.6	68.6	4.80	4.84	4.84	5.52	5.34	5.45	5	5.00
	17:12		Middle	3.0	23.30	23.30		7.73	7.73		32.87	32.87		68.9	68.9		4.87	4.86		5.47	5.48		5	
7/12/18	15:45	Cloudy	Middle	2.5	22.30	22.30	22.25	7.79	7.79	7.79	33.23	33.23	33.23	71.9	72.9	72.9	5.16	5.23	5.23	5.70	5.70	5.70	4	4.00
	15:47		Middle	2.5	22.20	22.20		7.79	7.79		33.23	33.23		73.4	73.3		5.27	5.27		5.71	5.67		4	
10/12/18	10:45	Cloudy	Middle	3.0	21.30	21.30	21.30	7.30	7.30	7.30	33.76	33.76	33.76	70.7	71.8	72.1	5.15	5.23	5.26	7.88	7.86	7.83	7	7.00
	10:47		Middle	3.0	21.30	21.30		7.30	7.30		33.76	33.76		72.8	73.0		5.32	5.32		7.80	7.77		7	
12/12/18	9:35	Fine	Middle	2.5	20.10	20.10	20.05	7.17	7.17	7.17	33.75	33.75	33.75	64.3	65.3	64.5	4.79	4.66	4.75	6.17	6.16	6.16	6	7.00
	9:37		Middle	2.5	20.00	20.00		7.17	7.17		33.75	33.75		64.4	63.8		4.80	4.76		6.15	6.15		8	
14/12/18	13:30	Cloudy	Middle	3.0	20.40	20.40	20.40	7.07	7.07	7.08	33.90	33.90	33.90	71.9	72.4	72.2	5.31	5.35	5.34	5.19	5.17	5.17	5	4.50
	13:32		Middle	3.0	20.40	20.40		7.08	7.08		33.90	33.90		72.3	72.3		5.35	5.34		5.16	5.17		4	
17/12/18	14:30	Fine	Middle	2.5	20.60	20.60	20.60	7.16	7.16	7.17	33.80	33.80	33.81	61.6	61.8	61.6	4.54	4.65	4.57	4.90	4.97	5.00	5	4.50
	14:32		Middle	2.5	20.60	20.60		7.18	7.18		33.81	33.81		61.7	61.3		4.55	4.52		5.06	5.07		4	
19/12/18	15:19	Fine	Middle	2.5	20.70	20.70	20.70	7.36	7.36	7.37	33.55	33.50	33.60	66.5	65.4	65.1	4.89	4.82	4.80	4.23	4.23	4.21	5	5.00
	15:21		Middle	2.5	20.70	20.70		7.37	7.37		33.68	33.68		64.5	64.1		4.75	4.72		4.19	4.19		5	
21/12/18	16:50	Fine	Middle	3.0	21.70	21.70	21.70	7.55	7.55	7.55	33.64	33.64	33.64	72.5	72.7	73.2	5.24	5.26	5.29	4.67	4.68	4.73	4	4.50
	16:52		Middle	3.0	21.70	21.70		7.55	7.55		33.64	33.64		73.8	73.9		5.33	5.34		4.88	4.70		5	
24/12/18	8:45	Cloudy	Middle	3.0	20.70	20.70	20.65	7.39	7.39	7.39	33.59	33.59	33.59	68.7	69.9	68.8	5.04	5.16	5.07	5.36	5.42	5.41	6	5.50
	8:47		Middle	3.0	20.60	20.60		7.38	7.38		33.59	33.59		67.6	68.8		4.99	5.07		5.43	5.42		5	

Remarks:
Single underline denotes exceedance over Action Level.
Double underline denotes exceedance over Limit Level.



**Water Monitoring Result at RW21-P789 - GEC / CRB / SHK
Mid-Flood Tide**

Date	Time	Weather Condition	Sampling Depth	m	Water Temperature			pH			Salinity			DO Saturation			DO			Turbidity			Suspended Solids		
					°C			-			ppt			%			mg/L			NTU			mg/L		
					Value	Average		Value	Average		Value	Average		Value	Average		Value	Average		Value	Average		Value	Average	
28/11/18	10:40	Cloudy	Middle	4.0	23.00	23.00	22.95	7.40	7.40	7.41	32.72	32.72	32.72	68.7	69.3	69.7	4.89	4.93	4.96	8.00	7.99	8.00	14	13.00	
	10:42		Middle	4.0	22.90	22.90		7.41	7.41		32.71	32.71		70.4	70.2		5.01	4.99		7.99	8.01		12		
30/11/18	15:10	Fine	Middle	4.0	23.10	23.10	23.10	7.41	7.41	7.42	32.96	32.96	32.97	72.5	72.9	73.0	5.14	5.17	5.17	7.01	7.00	6.97	9	8.50	
	15:12		Middle	4.0	23.10	23.10		7.42	7.42		32.97	32.97		73.3	73.3		5.19	5.19		6.93	6.94		8		
3/12/18	16:05	Fine	Middle	4.0	23.70	23.70	23.75	7.57	7.57	7.57	32.76	32.76	32.76	72.0	72.9	72.8	5.05	5.11	5.10	3.95	3.94	3.94	4	4.50	
	16:07		Middle	4.0	23.80	23.80		7.57	7.57		32.75	32.75		73.1	73.0		5.12	5.11		3.94	3.94		5		
5/12/18	16:00	Cloudy	Middle	4.0	23.40	23.40	23.40	7.72	7.72	7.73	32.94	32.94	32.94	71.9	73.8	74.2	5.06	5.20	5.23	4.30	4.29	4.28	2	2.00	
	16:02		Middle	4.0	23.40	23.40		7.73	7.73		32.94	32.94		75.7	75.5		5.33	5.32		4.26	4.25		2		
7/12/18	16:15	Cloudy	Middle	4.0	22.60	22.60	22.55	7.79	7.79	7.79	32.63	32.63	32.64	70.0	71.1	71.3	5.02	5.10	5.11	4.59	4.58	4.62	5	5.00	
	16:17		Middle	4.0	22.50	22.50		7.79	7.79		32.64	32.64		72.1	71.9		5.17	5.15		4.64	4.65		5		
10/12/18	11:15	Cloudy	Middle	4.0	21.60	21.60	21.55	7.30	7.30	7.31	33.83	33.83	33.83	76.3	76.4	76.5	5.53	5.54	5.55	6.68	6.68	6.68	6	6.50	
	11:17		Middle	4.0	21.50	21.50		7.32	7.32		33.83	33.83		76.6	76.8		5.56	5.57		6.67	6.68		7		
12/12/18	9:55	Fine	Middle	3.5	20.20	20.20	20.15	7.30	7.30	7.30	33.74	33.74	33.74	72.4	73.0	73.4	5.38	5.42	5.46	6.26	6.26	6.26	5	5.00	
	9:57		Middle	3.5	20.10	20.10		7.30	7.30		33.74	33.74		74.0	74.2		5.51	5.52		6.26	6.27		5		
14/12/18	14:15	Cloudy	Middle	4.0	20.80	20.80	20.75	7.15	7.15	7.16	33.60	33.60	33.60	72.8	72.3	72.7	5.35	5.32	5.35	5.09	5.01	5.03	4	4.00	
	14:17		Middle	4.0	20.70	20.70		7.17	7.17		33.60	33.60		72.8	72.9		5.35	5.37		5.00	5.02		4		
17/12/18	15:17	Fine	Middle	2.5	20.80	20.80	20.80	7.17	7.14	7.16	33.90	33.90	33.88	59.3	59.4	59.3	4.35	4.36	4.34	7.46	7.46	7.46	7	7.50	
	15:19		Middle	2.5	20.80	20.80		7.16	7.16		33.86	33.86		59.9	58.5		4.34	4.30		7.46	7.46		8		
19/12/18	16:01	Fine	Middle	3.5	20.90	20.90	20.90	7.33	7.33	7.34	33.75	33.75	33.73	64.5	63.9	63.6	4.73	4.68	4.65	5.59	5.69	5.61	6	6.00	
	16:03		Middle	3.5	20.90	20.90		7.35	7.35		33.71	33.71		63.4	62.7		4.65	4.52		5.58	5.57		6		
21/12/18	17:20	Fine	Middle	4.0	21.70	21.70	21.75	7.50	7.50	7.51	33.67	33.67	33.67	76.3	77.3	77.6	5.50	5.57	5.60	4.57	4.48	4.51	4	4.00	
	17:22		Middle	4.0	21.80	21.80		7.51	7.51		33.67	33.67		78.4	78.5		5.65	5.66		4.49	4.50		4		
24/12/18	9:15	Cloudy	Middle	4.0	20.70	20.70	20.65	7.35	7.35	7.35	33.28	33.28	33.33	68.5	69.2	69.8	5.05	5.11	5.15	5.11	5.11	5.12	5	5.00	
	9:17		Middle	4.0	20.60	20.60		7.35	7.35		33.38	33.38		70.6	70.8		5.21	5.23		5.12	5.13		5		

Remarks:
Single underline denotes exceedance over Action Level.
Double underline denotes exceedance over Limit Level.



**Water Monitoring Result at WSD19 - Sheung Wan
Mid-Flood Tide**

Date	Time	Weather Condition	Sampling Depth	Water Temperature		pH		Salinity		DO Saturation		DO		Turbidity		Suspended Solids								
				°C		-		ppt		%		mg/L		NTU		mg/L								
				Value	Average	Value	Average	Value	Average	Value	Average	Value	Average	Value	Average	Value	Average							
28/11/18	13:30	Cloudy	Middle	4.0	22.80	22.80	22.80	7.46	7.46	7.47	32.94	32.94	32.94	78.9	79.0	78.5	5.62	5.62	5.59	9.22	9.24	9.23	12	12.00
	13:32		Middle	4.0	22.80	22.80	22.80	7.48	7.48	7.47	32.94	32.94	32.94	78.1	77.8	78.5	5.57	5.54	5.59	9.24	9.21	9.23	12	
30/11/18	12:45	Fine	Middle	4.0	23.80	23.80	23.85	6.86	6.86	6.83	32.69	32.69	32.68	68.0	68.1	68.5	4.83	4.83	4.82	7.39	7.36	7.40	13	12.50
	12:47		Middle	4.0	23.90	23.90	23.85	6.80	6.80	6.83	32.67	32.67	32.68	68.9	68.8	68.5	4.82	4.81	4.82	7.40	7.43	7.40	12	
3/12/18	13:50	Fine	Middle	3.5	24.10	24.10	24.15	7.37	7.37	7.38	32.85	32.85	32.85	73.8	74.4	74.2	5.14	5.17	5.16	4.78	4.81	4.83	6	6.50
	13:52		Middle	3.5	24.20	24.20	24.15	7.39	7.39	7.38	32.85	32.85	32.85	74.1	74.3	74.2	5.15	5.16	5.16	4.84	4.89	4.83	7	
5/12/18	14:30	Cloudy	Middle	3.5	23.70	23.70	23.75	7.60	7.60	7.62	32.95	32.95	32.96	70.7	70.3	69.2	4.94	4.92	4.84	6.89	6.88	6.86	9	9.00
	14:32		Middle	3.5	23.80	23.80	23.75	7.63	7.63	7.62	32.96	32.96	32.96	68.0	67.9	69.2	4.76	4.75	4.84	6.84	6.82	6.86	9	
7/12/18	17:15	Cloudy	Middle	4.0	22.50	22.50	22.45	7.76	7.76	7.77	33.18	33.18	33.18	71.6	71.9	71.9	5.12	5.17	5.15	6.53	6.51	6.52	7	7.00
	17:17		Middle	4.0	22.40	22.40	22.45	7.77	7.77	7.77	33.18	33.18	33.18	72.1	72.1	71.9	5.16	5.16	5.15	6.51	6.53	6.52	7	
10/12/18	8:30	Cloudy	Middle	3.5	21.20	21.20	21.15	7.20	7.20	7.22	33.66	33.66	33.66	66.1	66.2	66.1	4.83	4.84	4.83	7.03	7.00	6.99	7	7.50
	8:32		Middle	3.5	21.10	21.10	21.15	7.23	7.23	7.22	33.66	33.66	33.66	66.1	66.0	66.1	4.83	4.83	4.83	6.99	6.94	6.99	8	
12/12/18	10:45	Fine	Middle	4.0	20.60	20.60	20.45	7.36	7.36	7.36	33.78	33.78	33.79	74.4	74.3	74.0	4.51	4.50	4.48	6.00	6.03	6.04	7	6.50
	10:47		Middle	4.0	20.30	20.30	20.45	7.35	7.35	7.36	33.80	33.80	33.79	73.7	73.7	74.0	4.46	4.46	4.48	6.05	6.08	6.04	6	
14/12/18	15:30	Cloudy	Middle	4.0	20.90	20.90	20.85	7.17	7.17	7.19	33.82	33.82	33.83	73.3	73.5	73.6	5.38	5.40	5.40	5.90	5.93	5.93	6	5.50
	15:32		Middle	4.0	20.80	20.80	20.85	7.20	7.20	7.19	33.83	33.83	33.83	73.7	73.9	73.6	5.41	5.41	5.40	5.94	5.94	5.93	5	
17/12/18	12:56	Fine	Middle	3.5	20.80	20.80	20.80	7.20	7.20	7.22	34.00	34.00	34.02	57.2	56.8	57.0	4.19	4.17	4.18	7.99	8.00	8.01	6	6.00
	12:58		Middle	3.5	20.80	20.80	20.80	7.24	7.24	7.22	34.04	34.03	34.02	56.7	57.1	57.0	4.16	4.19	4.18	8.00	8.03	8.01	6	
19/12/18	14:14	Fine	Middle	3.5	21.30	21.30	21.35	7.17	7.17	7.19	33.92	33.92	33.89	56.6	55.9	55.1	4.11	4.16	4.03	6.68	6.63	6.66	6	6.00
	14:16		Middle	3.5	21.40	21.40	21.35	7.21	7.21	7.19	33.86	33.86	33.89	54.4	53.5	55.1	3.95	3.88	4.03	6.65	6.66	6.66	6	
21/12/18	15:20	Fine	Middle	4.0	22.50	22.50	22.60	7.01	7.01	7.06	33.02	33.02	33.01	73.2	72.8	72.7	5.23	5.20	5.18	7.66	7.71	7.70	9	9.00
	15:22		Middle	4.0	22.70	22.70	22.60	7.10	7.10	7.06	33.00	33.00	33.01	72.2	72.0	72.7	5.15	5.14	5.18	7.71	7.71	7.70	9	
24/12/18	7:30	Cloudy	Middle	4.0	20.30	20.30	20.25	7.22	7.22	7.23	33.77	33.77	33.78	67.9	67.8	67.0	5.03	5.03	4.98	5.67	5.69	5.69	4	4.00
	7:32		Middle	4.0	20.20	20.20	20.25	7.24	7.24	7.23	33.78	33.78	33.78	66.3	66.1	67.0	4.93	4.92	4.98	5.70	5.68	5.69	4	

Remarks:
Single underline denotes exceedance over Action Level.
Double underline denotes exceedance over Limit Level.



**Water Monitoring Result at C1 - HKCEC
Mid-Ebb Tide**

Date	Time	Weather Condition	Sampling Depth		Water Temperature			pH			Salinity			DO Saturation		DO		Turbidity		Suspended Solids				
					°C		-		ppt		%		mg/L		NTU		mg/L							
					Value	Average	Value	Average	Value	Average	Value	Average	Value	Average	Value	Average	Value	Average	Value	Average				
28/11/18	4:05	Cloudy	Middle	2.5	21.50	21.50	21.50	8.26	8.26	8.26	32.50	32.50	32.50	78.5	76.1	77.3	5.74	5.56	5.65	1.21	1.26	1.20	6	5.50
	4:06		Middle	2.5	21.50	21.50		8.26	8.26		32.50	32.50		76.6	77.8		5.61	5.69		1.17	1.15		5	
30/11/18	4:12	Cloudy	Middle	3.0	21.30	21.30	21.30	8.21	8.21	8.21	32.67	32.67	32.67	71.3	72.2	71.4	5.23	5.30	5.25	1.11	1.16	1.16	5	4.00
	4:13		Middle	3.0	21.30	21.30		8.21	8.21		32.67	32.67		71.7	70.5		5.27	5.18		1.18	1.20		3	
3/12/18	11:35	Fine	Middle	2.5	23.60	23.60	23.60	7.56	7.56	7.57	32.87	32.87	32.87	72.8	73.1	73.0	5.11	5.13	5.12	4.67	4.71	4.68	7	7.00
	11:37		Middle	2.5	23.60	23.60		7.57	7.57		32.87	32.87		73.1	73.1		5.13	5.13		4.68	4.65		7	
5/12/18	10:20	Fine	Middle	2.5	23.40	23.40	23.45	7.70	7.70	7.70	32.93	32.93	32.93	72.5	73.1	73.3	5.11	5.14	5.16	4.55	4.56	4.55	2	2.50
	10:22		Middle	2.5	23.50	23.50		7.70	7.70		32.93	32.93		73.7	73.7		5.19	5.18		4.54	4.53		3	
7/12/18	12:25	Cloudy	Middle	2.5	22.60	22.60	22.55	7.79	7.79	7.79	33.61	33.61	33.61	71.2	73.2	72.2	5.03	5.18	5.12	7.19	7.17	7.17	6	6.50
	12:27		Middle	2.5	22.50	22.50		7.79	7.79		33.61	33.61		72.1	72.2		5.14	5.14		7.16	7.15		7	
10/12/18	3:41	Cloudy	Middle	2.5	19.80	19.80	19.80	8.22	8.22	8.22	33.11	33.11	33.11	75.4	76.4	76.2	5.67	5.75	5.73	1.29	1.26	1.35	5	5.00
	3:42		Middle	2.5	19.80	19.80		8.22	8.22		33.11	33.11		76.8	76.1		5.78	5.72		1.44	1.39		5	
12/12/18	4:16	Cloudy	Middle	2.5	19.10	19.10	19.10	8.36	8.36	8.36	33.36	33.36	33.36	76.4	77.5	78.0	5.81	5.90	5.92	1.20	1.16	1.21	3	3.00
	4:17		Middle	2.5	19.10	19.10		8.36	8.36		33.36	33.36		78.7	79.5		5.91	6.05		1.22	1.24		3	
14/12/18	4:30	Cloudy	Middle	2.5	19.60	19.60	19.60	8.32	8.32	8.32	33.47	33.48	33.48	79.5	81.5	81.0	5.99	6.14	6.11	1.31	1.36	1.40	6	5.00
	4:31		Middle	2.5	19.60	19.60		8.32	8.32		33.48	33.48		81.7	81.4		6.16	6.13		1.42	1.49		4	
17/12/18	7:22	Cloudy	Middle	3.0	19.50	19.50	19.50	8.26	8.26	8.26	33.44	33.44	33.45	76.1	77.7	77.5	5.74	5.86	5.85	1.32	1.36	1.32	6	6.00
	7:23		Middle	3.0	19.50	19.50		8.26	8.26		33.45	33.45		78.1	78.0		5.90	5.89		1.30	1.28		6	
19/12/18	10:40	Fine	Middle	2.5	20.40	20.40	20.40	7.36	7.36	7.36	33.83	33.83	33.83	64.5	64.8	64.9	4.77	4.79	4.80	4.56	4.55	4.63	4	4.00
	10:42		Middle	2.5	20.40	20.40		7.36	7.36		33.83	33.83		65.1	65.2		4.82	4.82		4.64	4.77		4	
21/12/18	2:18	Cloudy	Middle	2.5	20.80	20.80	20.80	8.13	8.13	8.13	32.89	32.89	32.89	75.1	74.1	74.2	5.54	5.47	5.48	1.40	1.32	1.34	4	3.50
	2:19		Middle	2.5	20.80	20.80		8.13	8.13		32.89	32.89		75.3	72.3		5.56	5.33		1.34	1.30		3	
24/12/18	2:57	Cloudy	Middle	2.5	20.10	20.10	20.10	8.08	8.08	8.08	33.12	33.12	33.12	75.5	76.9	75.3	5.64	5.74	5.62	1.31	1.29	1.23	4	4.50
	2:58		Middle	2.5	20.10	20.10		8.08	8.08		33.12	33.12		74.6	74.0		5.57	5.53		1.12	1.18		5	

Remarks:
Single underline denotes exceedance over Action Level.
Double underline denotes exceedance over Limit Level.



**Water Monitoring Result at P1 - HKCEC Phase I
Mid-Ebb Tide**

Date	Time	Weather Condition	Sampling Depth		Water Temperature		pH			Salinity			DO Saturation		DO		Turbidity		Suspended Solids					
					°C		-			ppt			%		mg/L		NTU		mg/L					
					Value	Average	Value	Average	Value	Average	Value	Average	Value	Average	Value	Average	Value	Average	Value	Average				
28/11/18	3:38	Cloudy	Middle	2.5	21.60	21.60	21.60	8.24	8.24	8.24	32.40	32.40	32.40	75.7	78.0	77.5	5.52	5.70	5.66	4.38	4.44	4.45	5	5.50
	3:39		Middle	2.5	21.60	21.60		8.24	8.24		32.40	32.40		78.1	78.0		5.70	5.70		4.50	4.47		6	
30/11/18	3:43	Cloudy	Middle	3.0	21.10	21.10	21.10	8.24	8.24	8.24	32.69	32.69	32.69	77.1	78.3	77.5	5.67	5.76	5.70	1.36	1.43	1.41	3	3.00
	3:44		Middle	3.0	21.10	21.10		8.24	8.24		32.69	32.69		77.9	76.6		5.73	5.64		1.41	1.45		3	
3/12/18	11:15	Fine	Middle	2.5	23.80	23.80	23.85	7.44	7.44	7.45	33.08	33.08	33.08	76.7	76.9	76.2	5.36	5.70	5.40	4.06	4.04	4.04	7	7.50
	11:17		Middle	2.5	23.90	23.90		7.46	7.46		33.08	33.08		75.5	75.5		5.27	5.27		4.03	4.03		8	
5/12/18	10:00	Fine	Middle	2.5	23.60	23.60	23.65	7.63	7.63	7.64	32.95	32.95	32.96	76.3	76.6	76.9	5.35	5.37	5.39	4.41	4.34	4.38	4	4.00
	10:02		Middle	2.5	23.70	23.70		7.64	7.64		32.96	32.96		77.4	77.4		5.43	5.42		4.38	4.40		4	
7/12/18	12:05	Cloudy	Middle	2.5	22.60	22.60	22.60	7.69	7.69	7.70	33.34	33.34	33.34	70.7	72.4	72.4	5.04	5.15	5.16	6.56	6.53	6.52	7	7.00
	12:07		Middle	2.5	22.60	22.60		7.70	7.70		33.34	33.34		73.2	73.3		5.22	5.23		6.50	6.49		7	
10/12/18	3:10	Cloudy	Middle	2.5	19.60	19.60	19.60	8.23	8.23	8.23	33.10	33.10	33.10	79.4	79.3	79.0	5.99	5.97	5.96	1.94	1.33	1.59	6	5.50
	3:11		Middle	2.5	19.60	19.60		8.23	8.23		33.10	33.10		79.0	78.4		5.95	5.91		1.57	1.53		5	
12/12/18	3:45	Cloudy	Middle	2.5	19.00	19.00	19.00	8.38	8.38	8.38	33.37	33.37	33.37	79.5	79.4	79.6	6.06	6.05	6.07	1.26	1.17	1.21	4	4.00
	3:46		Middle	2.5	19.00	19.00		8.38	8.38		33.37	33.37		80.2	79.3		6.11	6.04		1.28	1.14		4	
14/12/18	3:58	Cloudy	Middle	2.5	18.80	18.80	18.80	8.35	8.35	8.35	33.52	33.52	33.52	80.7	82.3	81.8	6.15	6.29	6.25	1.52	1.54	1.58	6	6.00
	3:59		Middle	2.5	18.80	18.80		8.35	8.35		33.52	33.52		82.4	81.9		6.29	6.25		1.59	1.66		6	
17/12/18	5:25	Cloudy	Middle	3.0	19.30	19.30	19.30	8.31	8.31	8.31	33.46	33.46	33.46	79.5	79.7	80.2	6.03	6.04	6.08	1.20	1.17	1.19	4	4.00
	5:26		Middle	3.0	19.30	19.30		8.31	8.31		33.46	33.46		80.7	80.8		6.11	6.12		1.15	1.24		4	
19/12/18	10:24	Fine	Middle	2.5	20.40	20.40	20.40	7.30	7.30	7.31	33.88	33.88	33.88	55.1	55.2	55.4	4.08	4.08	4.10	4.77	4.78	4.79	4	4.00
	10:26		Middle	2.5	20.40	20.40		7.32	7.32		33.87	33.87		55.5	55.7		4.10	4.12		4.79	4.80		4	
21/12/18	1:53	Cloudy	Middle	2.5	20.80	20.80	20.80	8.15	8.15	8.15	33.01	33.01	33.01	76.4	76.6	76.8	5.64	5.64	5.66	1.53	1.59	1.61	3	3.50
	1:54		Middle	2.5	20.80	20.80		8.15	8.15		33.01	33.01		77.3	76.9		5.70	5.68		1.62	1.68		4	
24/12/18	2:27	Cloudy	Middle	2.5	20.10	20.10	20.10	8.11	8.11	8.11	33.19	33.19	33.19	77.4	78.5	78.2	5.78	5.86	5.84	1.29	1.26	1.31	6	5.50
	2:28		Middle	2.5	20.10	20.10		8.11	8.11		33.19	33.19		78.6	78.3		5.87	5.85		1.33	1.36		5	

Remarks:
Single underline denotes exceedance over Action Level.
Double underline denotes exceedance over Limit Level.



**Water Monitoring Result at P3 - APA
Mid-Ebb Tide**

Date	Time	Weather Condition	Sampling Depth		Water Temperature			pH			Salinity			DO Saturation		DO		Turbidity		Suspended Solids				
					°C		-		ppt		%		mg/L		NTU		mg/L							
					Value	Average	Value	Average	Value	Average	Value	Average	Value	Average	Value	Average	Value	Average	Value	Average				
28/11/18	3:43	Cloudy	Middle	2.5	21.60	21.60	21.60	8.27	8.27	8.27	32.50	32.50	32.50	78.1	77.7	76.9	5.70	5.64	5.60	1.88	1.66	1.74	7	7.50
	3:44		Middle	2.5	21.60	21.60		8.27	8.27		32.50	32.50		75.8	76.0		5.53	5.54		1.70	1.73		8	
30/11/18	3:49	Cloudy	Middle	3.0	21.00	21.00	21.00	8.25	8.25	8.25	32.27	32.27	32.27	78.3	77.8	77.6	5.80	5.75	5.74	2.17	2.09	2.16	4	3.50
	3:50		Middle	3.0	21.00	21.00		8.25	8.25		32.27	32.27		77.6	76.5		5.74	5.66		2.28	2.10		3	
3/12/18	11:20	Fine	Middle	2.5	23.30	23.30	23.35	7.51	7.51	7.51	33.06	33.06	33.06	73.9	74.4	74.3	5.21	5.24	5.23	3.90	3.90	3.90	8	8.00
	11:22		Middle	2.5	23.40	23.40		7.51	7.51		33.06	33.06		74.4	74.4		5.24	5.24		3.90	3.91		8	
5/12/18	10:05	Fine	Middle	2.5	23.30	23.30	23.35	7.65	7.65	7.65	32.93	32.93	32.93	76.3	76.4	76.5	5.38	5.38	5.39	4.35	4.36	4.31	4	4.00
	10:07		Middle	2.5	23.40	23.40		7.65	7.65		32.93	32.93		76.6	76.6		5.40	5.40		4.17	4.37		4	
7/12/18	12:10	Cloudy	Middle	2.5	22.50	22.50	22.50	7.72	7.72	7.72	33.36	33.36	33.36	72.6	72.8	73.1	5.18	5.20	5.22	6.13	6.13	6.13	7	7.00
	12:12		Middle	2.5	22.50	22.50		7.72	7.72		33.36	33.36		73.4	73.5		5.25	5.25		6.12	6.14		7	
10/12/18	3:18	Cloudy	Middle	2.5	19.50	19.50	19.50	8.25	8.25	8.25	33.10	33.10	33.10	79.6	78.2	79.2	6.01	5.90	5.98	1.60	1.19	1.54	5	5.00
	3:19		Middle	2.5	19.50	19.50		8.25	8.25		33.10	33.10		79.3	79.6		5.99	6.01		1.70	1.68		5	
12/12/18	3:51	Cloudy	Middle	2.5	18.80	18.80	18.80	8.39	8.39	8.39	33.38	33.38	33.38	80.7	80.8	80.5	6.16	6.17	6.15	1.71	1.78	1.51	4	4.00
	3:52		Middle	2.5	18.80	18.80		8.39	8.39		33.38	33.38		80.4	80.0		6.15	6.11		1.23	1.31		4	
14/12/18	4:06	Cloudy	Middle	2.5	18.70	18.70	18.70	8.38	8.38	8.38	33.53	33.53	33.53	81.0	81.3	81.7	6.19	6.21	6.25	1.26	1.33	1.26	6	6.00
	4:07		Middle	2.5	18.70	18.70		8.38	8.38		33.53	33.53		82.2	82.4		6.28	6.30		1.19	1.24		6	
17/12/18	5:34	Cloudy	Middle	3.0	19.30	19.30	19.30	8.33	8.33	8.33	33.43	33.43	33.43	79.7	80.2	79.4	6.03	6.07	6.01	1.29	1.35	1.35	5	5.00
	5:35		Middle	3.0	19.30	19.30		8.33	8.33		33.43	33.43		79.5	78.1		6.01	5.91		1.37	1.39		5	
19/12/18	10:28	Fine	Middle	2.5	20.20	20.20	20.20	7.32	7.32	7.33	33.88	33.88	33.88	65.9	66.6	66.8	4.89	4.94	4.96	4.43	4.38	4.37	4	4.00
	10:30		Middle	2.5	20.20	20.20		7.33	7.33		33.88	33.88		67.1	67.7		4.98	5.02		4.34	4.33		4	
21/12/18	1:58	Cloudy	Middle	2.5	20.80	20.80	20.80	8.16	8.16	8.16	33.00	33.00	33.00	76.5	76.8	76.8	5.65	5.68	5.68	1.35	1.21	1.25	7	7.50
	1:59		Middle	2.5	20.80	20.80		8.16	8.16		33.00	33.00		76.4	77.6		5.64	5.73		1.18	1.24		8	
24/12/18	2:35	Cloudy	Middle	2.5	20.00	20.00	20.00	8.13	8.13	8.12	33.19	33.19	33.19	77.2	77.9	78.4	5.79	5.83	5.87	1.42	1.46	1.42	4	4.00
	2:36		Middle	2.5	20.00	20.00		8.13	8.10		33.19	33.19		78.9	79.5		5.91	5.95		1.40	1.38		4	

Remarks:
Single underline denotes exceedance over Action Level.
Double underline denotes exceedance over Limit Level.



**Water Monitoring Result at P4 - SOC
Mid-Ebb Tide**

Date	Time	Weather Condition	Sampling Depth		Water Temperature			pH			Salinity			DO Saturation		DO		Turbidity		Suspended Solids				
					°C			-			ppt			%		mg/L		NTU		mg/L				
					Value	Average		Value	Average		Value	Average		Value	Average		Value	Average	Value	Average	Value	Average	Value	Average
28/11/18	3:50	Cloudy	Middle	2.5	21.50	21.50	21.50	8.28	8.28	8.28	32.50	32.50	32.50	77.5	77.6	77.8	5.66	5.66	5.66	4.09	4.09	3.98	5	5.00
	3:51		Middle	2.5	21.50	21.50		8.28	8.28		32.50	32.50		78.2	77.7		5.72	5.58		3.84	3.89		5	
30/11/18	3:57	Cloudy	Middle	3.0	20.80	20.80	20.80	8.27	8.27	8.27	32.69	32.69	32.69	76.3	77.1	77.4	5.64	5.70	5.72	1.32	1.36	1.39	3	3.50
	3:58		Middle	3.0	20.80	20.80		8.27	8.27		32.69	32.69		78.2	78.1		5.78	5.77		1.41	1.47		4	
3/12/18	11:25	Fine	Middle	2.5	23.30	23.30	23.30	7.52	7.52	7.53	33.05	33.05	33.05	73.3	73.9	73.7	5.17	5.21	5.20	3.88	3.89	3.86	8	7.50
	11:27		Middle	2.5	23.30	23.30		7.53	7.53		33.05	33.05		73.9	73.8		5.21	5.21		3.84	3.81		7	
5/12/18	10:10	Fine	Middle	2.5	23.50	23.50	23.50	7.63	7.63	7.63	32.93	32.93	32.44	88.1	88.1	88.2	6.20	6.20	6.21	4.71	4.72	4.72	3	3.50
	10:12		Middle	2.5	23.50	23.50		7.63	7.63		31.91	32.00		88.2	88.4		6.21	6.22		4.72	4.72		4	
7/12/18	12:15	Cloudy	Middle	2.5	22.60	22.60	22.60	7.74	7.74	7.75	33.34	33.34	33.39	71.1	72.2	72.5	5.06	5.14	5.16	7.61	7.64	7.64	7	7.00
	12:17		Middle	2.5	22.60	22.60		7.75	7.75		33.44	33.44		73.3	73.3		5.22	5.22		7.65	7.65		7	
10/12/18	3:26	Cloudy	Middle	2.5	19.60	19.60	19.60	8.26	8.26	8.26	33.11	33.11	33.11	79.4	80.2	79.5	5.99	6.05	6.00	1.43	1.52	1.56	5	5.50
	3:27		Middle	2.5	19.60	19.60		8.26	8.26		33.11	33.11		79.3	79.1		5.98	5.97		1.66	1.61		6	
12/12/18	3:58	Cloudy	Middle	2.5	18.40	18.40	18.40	8.40	8.40	8.40	33.38	33.38	33.38	80.4	80.8	80.6	6.19	6.22	6.20	1.30	1.21	1.40	4	4.50
	3:59		Middle	2.5	18.40	18.40		8.40	8.40		33.38	33.38		80.9	80.1		6.23	6.17		1.54	1.53		5	
14/12/18	4:13	Cloudy	Middle	2.5	19.20	19.20	19.20	8.39	8.39	8.39	33.54	33.54	33.54	78.4	79.0	79.1	5.95	6.00	6.01	1.44	1.48	1.41	4	4.00
	4:14		Middle	2.5	19.20	19.20		8.39	8.39		33.54	33.54		79.8	79.3		6.06	6.02		1.32	1.40		4	
17/12/18	5:41	Cloudy	Middle	3.0	19.20	19.20	19.20	8.34	8.34	8.34	33.45	33.45	33.45	78.6	78.9	79.1	5.96	5.98	6.00	1.42	1.47	1.24	3	3.00
	5:42		Middle	3.0	19.20	19.20		8.34	8.34		33.45	33.45		79.4	79.5		6.02	6.03		1.52	0.55		3	
19/12/18	10:32	Fine	Middle	2.5	20.30	20.30	20.30	7.34	7.34	7.34	33.87	33.87	33.87	65.7	66.5	66.8	4.86	4.92	4.94	5.22	5.40	5.43	4	4.00
	10:34		Middle	2.5	20.30	20.30		7.34	7.34		33.87	33.87		67.3	67.7		4.98	5.01		5.57	5.53		4	
21/12/18	2:07	Cloudy	Middle	2.5	20.60	20.60	20.60	8.17	8.17	8.17	32.89	32.89	32.89	77.1	77.4	77.4	5.70	5.73	5.73	1.44	1.38	1.38	4	4.00
	2:08		Middle	2.5	20.60	20.60		8.17	8.17		32.89	32.89		77.8	77.4		5.76	5.73		1.31	1.40		4	
24/12/18	2:44	Cloudy	Middle	2.5	20.00	20.00	20.00	8.14	8.14	8.14	33.19	33.19	33.19	77.9	78.4	77.9	5.83	5.86	5.82	1.20	1.17	1.15	5	5.00
	2:45		Middle	2.5	20.00	20.00		8.14	8.14		33.19	33.19		78.1	77.0		5.83	5.75		1.14	1.10		5	

Remarks:
Single underline denotes exceedance over Action Level.
Double underline denotes exceedance over Limit Level.



**Water Monitoring Result at P5 - WCT / RT / IT
Mid-Ebb Tide**

Date	Time	Weather Condition	Sampling Depth		Water Temperature			pH			Salinity			DO Saturation			DO			Turbidity			Suspended Solids	
					°C		-		ppt		%		mg/L		NTU		mg/L							
					Value	Average	Value	Average	Value	Average	Value	Average	Value	Average	Value	Average	Value	Average	Value	Average				
28/11/18	3:55	Cloudy	Middle	2.5	21.40	21.40	21.40	8.28	8.28	8.28	32.50	32.50	32.50	74.8	75.5	75.8	5.45	5.57	5.53	2.86	2.47	2.76	5	4.00
	3:56		Middle	2.5	21.40	21.40		8.28	8.28	8.28	32.50	32.50		32.50	76.9		75.8	75.8		5.56	5.55		5.53	
30/11/18	4:06	Cloudy	Middle	3.0	21.20	21.20	21.20	8.27	8.27	8.27	32.68	32.68	32.68	71.9	72.2	71.7	5.28	5.32	5.27	1.58	1.64	1.68	4	3.50
	4:07		Middle	3.0	21.20	21.20		8.27	8.27	8.27	32.68	32.68		32.68	71.2		71.4	71.7		5.23	5.25		5.27	
3/12/18	11:30	Fine	Middle	2.5	23.30	23.30	23.30	7.54	7.54	7.54	33.09	33.09	33.09	74.5	75.0	75.1	5.26	5.29	5.30	3.52	3.51	3.51	8	7.50
	11:32		Middle	2.5	23.30	23.30		7.54	7.54	7.54	33.09	33.09		33.09	75.4		75.6	75.1		5.32	5.32		5.30	
5/12/18	10:15	Fine	Middle	2.5	23.50	23.50	23.50	7.69	7.69	7.70	32.95	32.95	32.95	74.5	74.8	74.8	5.24	5.46	5.34	4.72	4.70	4.69	4	4.00
	10:17		Middle	2.5	23.50	23.50		7.70	7.70	7.70	32.95	32.95		32.95	73.8		75.9	74.8		5.33	5.34		5.34	
7/12/18	12:20	Cloudy	Middle	2.5	22.50	22.50	22.50	7.76	7.76	7.77	33.48	33.48	33.48	72.6	74.9	75.1	5.17	5.34	5.36	7.37	7.39	7.38	8	8.00
	12:22		Middle	2.5	22.50	22.50		7.77	7.77	7.77	33.48	33.48		33.48	76.4		76.6	75.1		5.45	5.46		5.36	
10/12/18	3:34	Cloudy	Middle	2.5	19.60	19.60	19.60	8.28	8.28	8.28	33.10	33.10	33.10	79.0	78.7	78.6	5.95	5.93	5.92	1.12	1.07	1.11	5	5.00
	3:35		Middle	2.5	19.60	19.60		8.28	8.28	8.28	33.10	33.10		33.10	78.3		78.4	78.6		5.90	5.91		5.92	
12/12/18	4:11	Cloudy	Middle	2.5	19.00	19.00	19.00	8.41	8.41	8.41	33.37	33.37	33.37	79.4	79.5	79.3	6.05	6.06	6.04	1.06	1.11	1.10	5	4.50
	4:12		Middle	2.5	19.00	19.00		8.41	8.41	8.41	33.37	33.37		33.37	79.4		78.7	79.3		6.05	6.00		6.04	
14/12/18	4:21	Cloudy	Middle	2.5	19.70	19.70	19.70	8.40	8.40	8.40	33.52	33.52	33.52	76.6	76.5	76.6	5.76	5.76	5.77	1.61	1.67	1.60	6	5.50
	4:22		Middle	2.5	19.70	19.70		8.40	8.40	8.40	33.52	33.52		33.52	76.9		76.5	76.6		5.79	5.76		5.77	
17/12/18	5:47	Cloudy	Middle	3.0	19.50	19.50	19.50	8.35	8.35	8.35	33.46	33.46	33.46	76.5	76.6	76.7	5.76	5.77	5.78	1.40	1.48	1.48	6	6.50
	5:48		Middle	3.0	19.50	19.50		8.35	8.35	8.35	33.46	33.46		33.46	77.0		76.8	76.7		5.80	5.78		5.78	
19/12/18	10:36	Fine	Middle	2.5	20.30	20.30	20.30	7.35	7.35	7.35	33.85	33.85	33.86	61.3	61.4	61.2	4.54	4.55	4.53	5.71	5.71	5.69	5	4.50
	10:38		Middle	2.5	20.30	20.30		7.35	7.35	7.35	33.86	33.86		33.86	61.2		60.7	61.2		4.54	4.50		4.53	
21/12/18	2:11	Cloudy	Middle	2.5	20.50	20.50	20.50	8.18	8.18	8.18	32.89	32.89	32.89	75.1	74.9	76.4	5.57	5.56	5.67	1.36	1.42	1.34	5	5.00
	2:12		Middle	2.5	20.50	20.50		8.18	8.18	8.18	32.89	32.89		32.89	77.6		77.8	76.4		5.77	5.76		5.67	
24/12/18	2:51	Cloudy	Middle	2.5	20.00	20.00	20.00	8.15	8.15	8.15	33.19	33.19	33.19	78.0	77.9	78.0	5.83	5.82	5.83	1.34	1.32	1.30	4	4.00
	2:52		Middle	2.5	20.00	20.00		8.15	8.15	8.15	33.19	33.19		33.19	77.7		78.2	78.0		5.81	5.85		5.83	

Remarks:
Single underline denotes exceedance over Action Level.
Double underline denotes exceedance over Limit Level.



**Water Monitoring Result at RW21-P789 - GEC / CRB / SHK
Mid-Ebb Tide**

Date	Time	Weather Condition	Sampling Depth		Water Temperature		pH			Salinity			DO Saturation		DO		Turbidity		Suspended Solids					
					°C		-			ppt			%		mg/L		NTU		mg/L					
			m	Value	Average	Value	Average	Value	Average	Value	Average	Value	Average	Value	Average	Value	Average	Value	Average	Value	Average			
28/11/18	4:25	Cloudy	Middle	3.5	21.40	21.40	21.40	8.22	8.22	8.22	31.24	31.24	31.24	75.7	77.2	76.9	5.59	5.70	5.67	1.06	1.08	1.09	4	3.50
	4:26		Middle	3.5	21.40	21.40		8.22	8.22		31.24	31.24		77.2	77.4		5.69	5.71		1.10	1.13		3	
30/11/18	6:14	Cloudy	Middle	4.0	21.10	21.10	21.10	8.13	8.13	8.13	31.38	31.38	31.38	75.1	75.5	75.7	5.57	5.60	5.61	1.21	1.28	1.26	3	3.00
	6:15		Middle	4.0	21.10	21.10		8.13	8.13		31.38	31.38		76.0	76.1		5.64	5.64		1.30	1.24		3	
3/12/18	8:30	Fine	Middle	3.5	23.50	23.50	23.55	7.31	7.31	7.32	33.11	33.11	33.11	68.4	68.3	68.0	4.80	4.78	4.77	4.54	4.55	4.55	3	3.00
	8:32		Middle	3.5	23.60	23.60		7.32	7.32		33.11	33.11		67.8	67.6		4.76	4.74		4.55	4.56		3	
5/12/18	9:45	Fine	Middle	3.5	23.40	23.40	23.45	7.72	7.72	7.72	33.11	33.11	33.12	70.1	71.5	70.9	4.93	5.02	5.02	4.12	4.11	4.11	5	5.00
	9:47		Middle	3.5	23.50	23.50		7.72	7.72		33.12	33.12		71.0	71.0		5.06	5.06		4.11	4.11		5	
7/12/18	13:00	Cloudy	Middle	4.0	22.90	22.90	22.90	7.77	7.77	7.78	33.43	33.43	33.43	76.2	76.3	76.6	5.40	5.41	5.44	5.98	5.95	5.96	6	6.00
	13:02		Middle	4.0	22.90	22.90		7.78	7.78		33.43	33.43		76.9	77.1		5.46	5.47		5.95	5.94		6	
10/12/18	4:23	Cloudy	Middle	3.5	19.90	19.90	19.90	8.05	8.05	8.05	32.45	32.45	32.45	76.5	77.0	76.0	5.77	5.82	5.74	1.14	1.20	1.17	2	2.50
	4:24		Middle	3.5	19.90	19.90		8.05	8.05		32.45	32.45		75.0	75.5		5.66	5.70		1.18	1.17		3	
12/12/18	5:40	Cloudy	Middle	3.5	19.20	19.20	19.20	8.30	8.30	8.30	30.02	30.02	30.02	70.8	71.2	71.2	5.49	5.52	5.52	1.16	1.08	1.12	4	3.50
	5:41		Middle	3.5	19.20	19.20		8.30	8.30		30.02	30.02		71.9	70.8		5.57	5.49		1.12	1.10		3	
14/12/18	4:52	Cloudy	Middle	3.5	19.60	19.60	19.60	8.39	8.39	8.39	31.69	31.69	31.69	76.0	76.3	76.0	5.79	5.81	5.79	1.34	1.31	1.29	4	3.50
	4:53		Middle	3.5	19.60	19.60		8.39	8.39		31.69	31.69		75.8	75.9		5.78	5.79		1.22	1.29		3	
17/12/18	3:55	Cloudy	Middle	4.0	18.70	18.70	18.75	8.10	8.10	8.10	31.36	31.36	31.36	77.7	77.5	77.1	6.02	6.01	5.96	1.11	1.18	1.19	4	4.00
	3:56		Middle	4.0	18.80	18.80		8.10	8.10		31.36	31.36		76.5	76.7		5.84	5.95		1.21	1.24		4	
19/12/18	11:10	Fine	Middle	3.5	20.90	20.90	20.90	7.34	7.34	7.35	33.70	33.70	33.70	63.0	62.1	62.1	4.62	4.55	4.55	4.94	5.04	5.06	5	5.50
	11:12		Middle	3.5	20.90	20.90		7.36	7.36		33.70	33.70		61.6	61.6		4.52	4.52		5.07	5.19		6	
21/12/18	23:00	Cloudy	Middle	4.0	21.00	21.00	21.00	8.03	8.03	8.03	32.40	32.40	32.40	72.5	73.7	72.9	5.35	5.44	5.38	1.32	1.57	1.48	6	6.00
	23:01		Middle	4.0	21.00	21.00		8.03	8.03		32.40	32.40		73.0	72.5		5.38	5.35		1.50	1.52		6	
24/12/18	4:07	Cloudy	Middle	3.5	20.00	20.00	20.00	7.97	7.97	7.97	29.25	29.25	29.25	67.5	68.3	67.9	5.17	5.22	5.19	1.32	1.39	1.39	3	3.00
	4:08		Middle	3.5	20.00	20.00		7.97	7.97		29.25	29.25		68.2	67.4		5.22	5.16		1.44	1.42		3	

Remarks:
Single underline denotes exceedance over Action Level.
Double underline denotes exceedance over Limit Level.



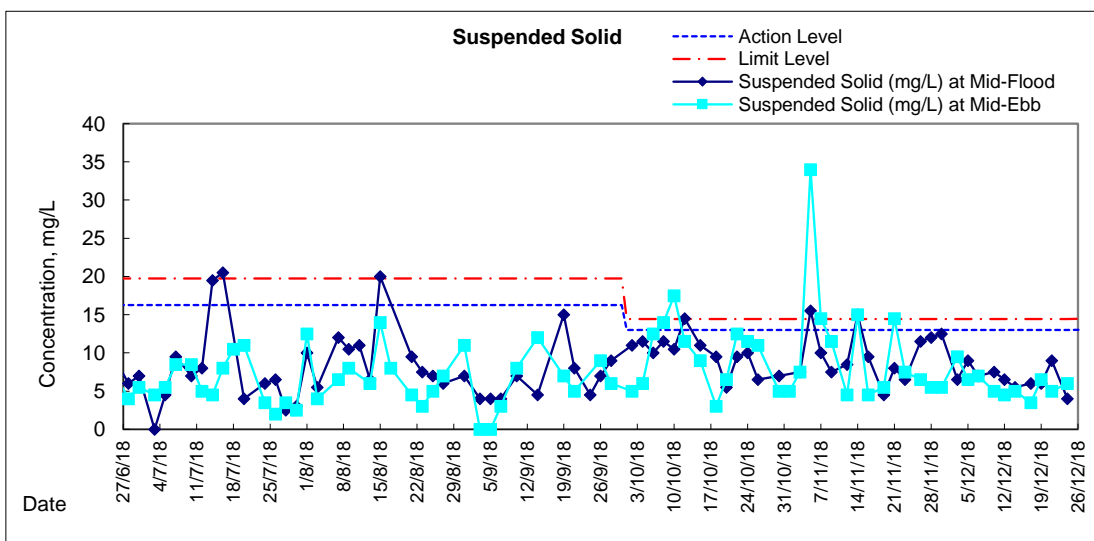
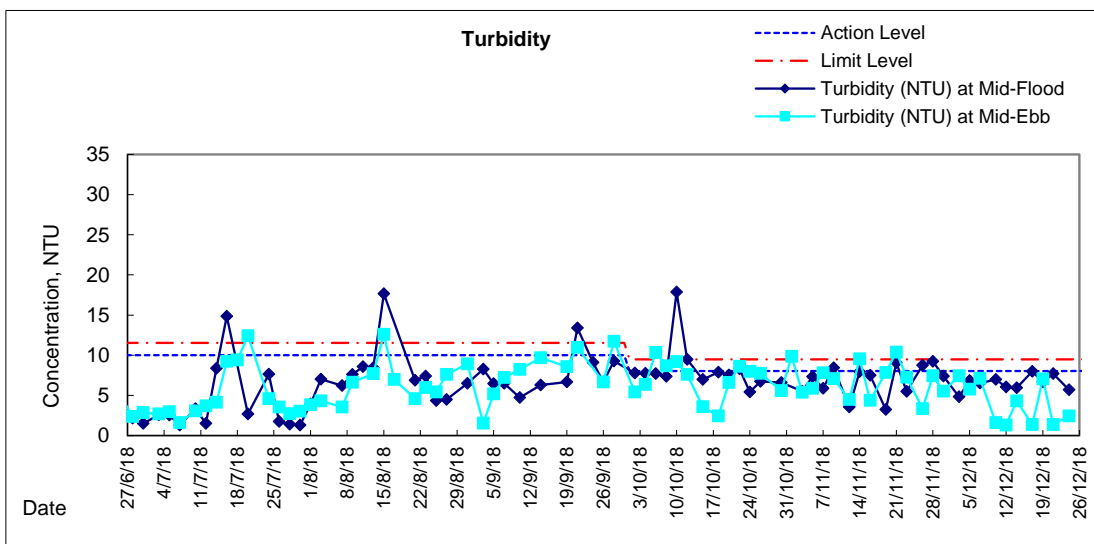
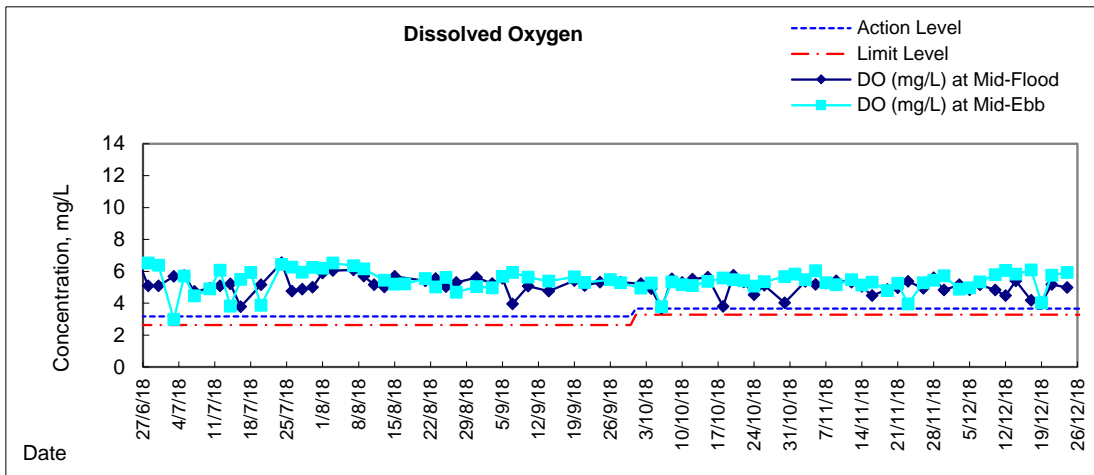
**Water Monitoring Result at WSD19 - Sheung Wan
Mid-Ebb Tide**

Date	Time	Weather Condition	Sampling Depth		Water Temperature		pH			Salinity		DO Saturation		DO		Turbidity		Suspended Solids						
					°C		-			ppt		%		mg/L		NTU		mg/L						
					Value	Average	Value	Average	Value	Average	Value	Average	Value	Average	Value	Average	Value	Average	Value	Average				
28/11/18	2:00	Cloudy	Middle	4.0	21.40	21.40	21.40	8.14	8.14	8.14	32.00	32.00	32.00	72.3	75.3	73.9	5.31	5.53	5.43	7.55	7.66	7.44	6	5.50
	2:01		Middle	4.0	21.40	21.40		8.14	8.14		32.00	32.00		73.7	74.3		5.42	5.46		7.23	7.31		5	
30/11/18	2:30	Cloudy	Middle	4.0	21.00	21.00	21.00	8.08	8.08	8.08	32.25	32.25	32.25	76.6	77.6	77.2	5.68	5.74	5.71	5.50	5.47	5.53	5	5.50
	2:31		Middle	4.0	21.00	21.00		8.08	8.08		32.25	32.25		77.5	76.9		5.73	5.69		5.77	5.38		6	
3/12/18	9:55	Fine	Middle	3.5	23.80	23.80	23.85	7.37	7.37	7.38	33.04	33.04	33.04	70.4	70.5	69.8	4.92	4.93	4.88	7.42	7.43	7.44	10	9.50
	9:57		Middle	3.5	23.90	23.90		7.39	7.39		33.04	33.04		69.0	69.2		4.82	4.83		7.45	7.45		9	
5/12/18	12:30	Fine	Middle	4.0	24.10	24.10	24.20	7.39	7.39	7.40	32.91	32.91	32.92	72.4	71.7	71.3	5.03	4.98	4.96	5.75	5.77	5.76	6	6.50
	12:32		Middle	4.0	24.30	24.30		7.41	7.41		32.92	32.92		70.4	70.6		4.88	4.96		5.76	5.74		7	
7/12/18	11:05	Cloudy	Middle	3.5	22.80	22.80	22.80	7.16	7.16	7.23	32.12	32.12	32.12	74.2	73.7	74.4	5.31	5.27	5.32	7.10	7.16	7.13	7	7.00
	11:07		Middle	3.5	22.80	22.80		7.30	7.30		32.11	32.11		74.7	74.9		5.35	5.36		7.12	7.14		7	
10/12/18	1:05	Cloudy	Middle	4.0	19.20	19.20	19.20	7.99	7.99	7.99	32.40	32.40	32.40	75.9	76.3	75.7	5.80	5.83	5.78	1.78	1.64	1.60	5	5.00
	1:06		Middle	4.0	19.20	19.20		7.99	7.99		32.40	32.40		75.5	74.9		5.77	5.73		1.51	1.48		5	
12/12/18	2:00	Cloudy	Middle	4.0	18.40	18.40	18.40	8.17	8.17	8.17	33.38	33.38	33.38	78.8	77.3	77.8	6.19	5.98	6.04	1.42	1.15	1.29	5	4.50
	2:01		Middle	4.0	18.40	18.40		8.17	8.17		33.38	33.38		77.0	77.9		5.96	6.04		1.21	1.39		4	
14/12/18	2:45	Cloudy	Middle	4.0	18.80	18.80	18.75	8.08	8.08	8.09	32.98	32.98	32.98	75.8	77.9	77.2	5.38	5.99	5.83	4.42	4.26	4.32	5	5.00
	2:46		Middle	4.0	18.70	18.70		8.09	8.09		32.98	32.98		77.3	77.6		5.95	5.98		4.22	4.39		5	
17/12/18	4:30	Cloudy	Middle	4.0	18.80	18.80	18.80	7.99	8.01	8.01	32.94	32.94	32.94	78.3	78.7	79.2	6.01	6.05	6.07	1.42	1.30	1.37	3	3.50
	4:31		Middle	4.0	18.80	18.80		8.02	8.02		32.94	32.94		79.4	80.2		6.10	6.14		1.40	1.36		4	
19/12/18	8:55	Fine	Middle	3.5	20.30	20.30	20.25	7.20	7.20	7.23	33.79	33.79	33.83	52.7	53.3	54.4	3.90	3.95	4.03	7.13	7.10	7.06	7	6.50
	8:57		Middle	3.5	20.20	20.20		7.25	7.25		33.86	33.86		54.8	56.6		4.06	4.20		7.01	7.00		6	
21/12/18	0:15	Cloudy	Middle	4.0	20.90	20.90	20.90	8.03	8.03	8.03	32.78	32.78	32.77	75.9	78.6	78.0	5.59	5.79	5.75	1.56	1.24	1.36	5	5.00
	0:16		Middle	4.0	20.90	20.90		8.03	8.03		32.75	32.75		79.1	78.4		5.83	5.78		1.22	1.41		5	
24/12/18	0:30	Cloudy	Middle	4.0	19.50	19.50	19.50	7.92	7.92	7.92	32.55	32.55	32.55	77.5	78.8	78.2	5.86	5.96	5.92	2.65	2.23	2.44	6	6.00
	0:31		Middle	4.0	19.50	19.50		7.92	7.92		32.55	32.55		78.3	78.0		5.93	5.92		2.48	2.40		6	

Remarks:
Single underline denotes exceedance over Action Level.
Double underline denotes exceedance over Limit Level.

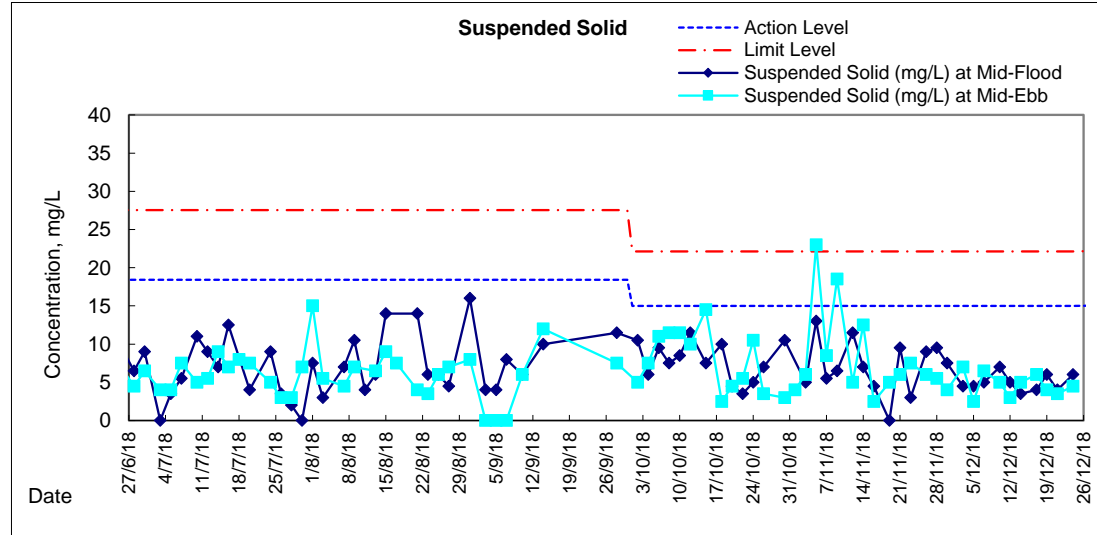
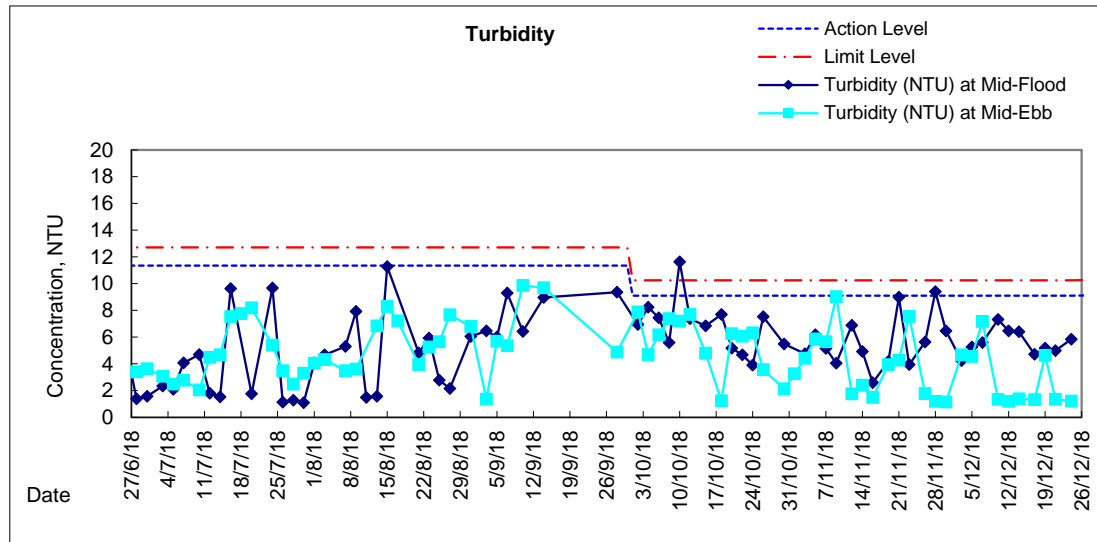
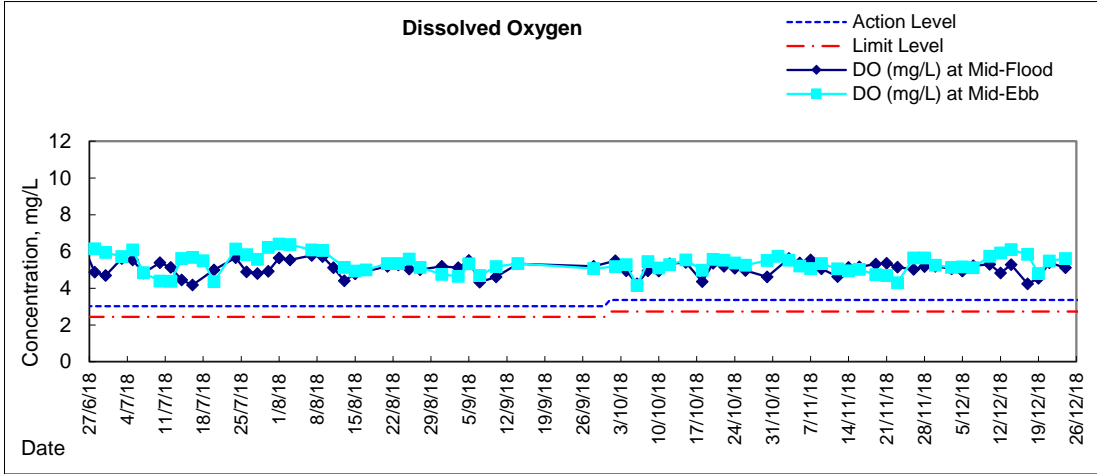


Graphic Presentation of Water Quality Result of WSD19 - Sheung Wan



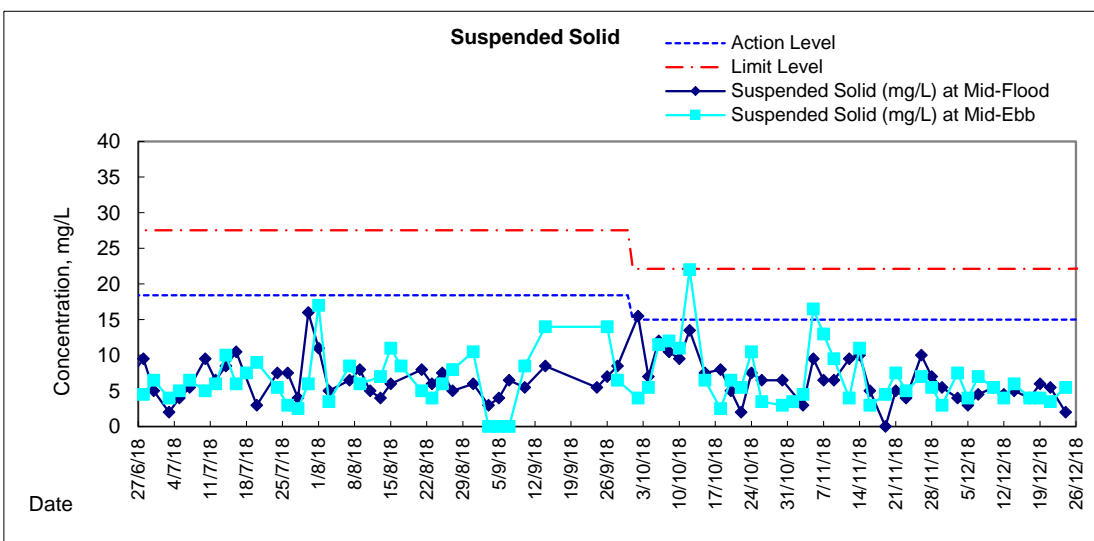
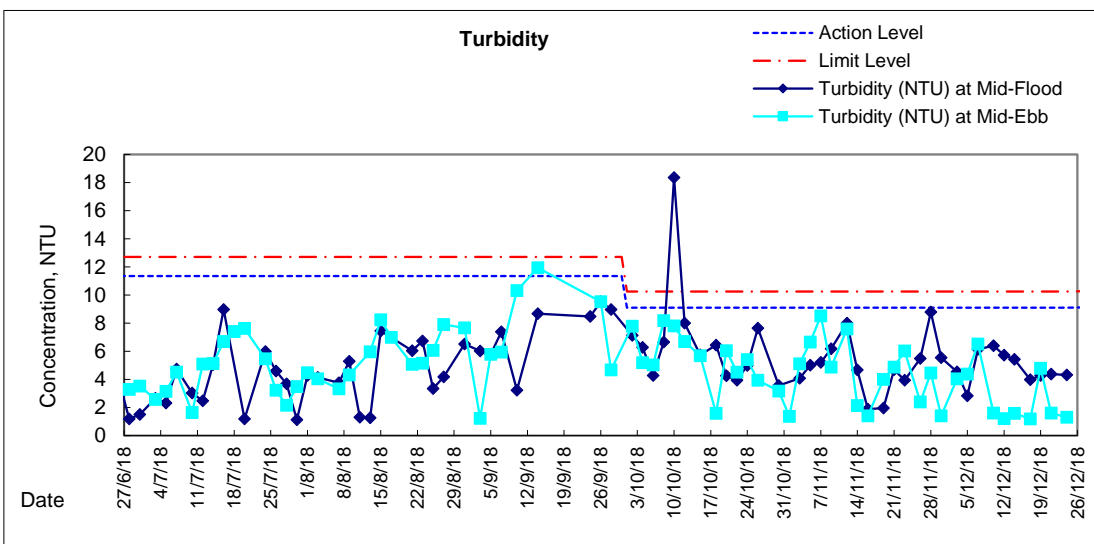
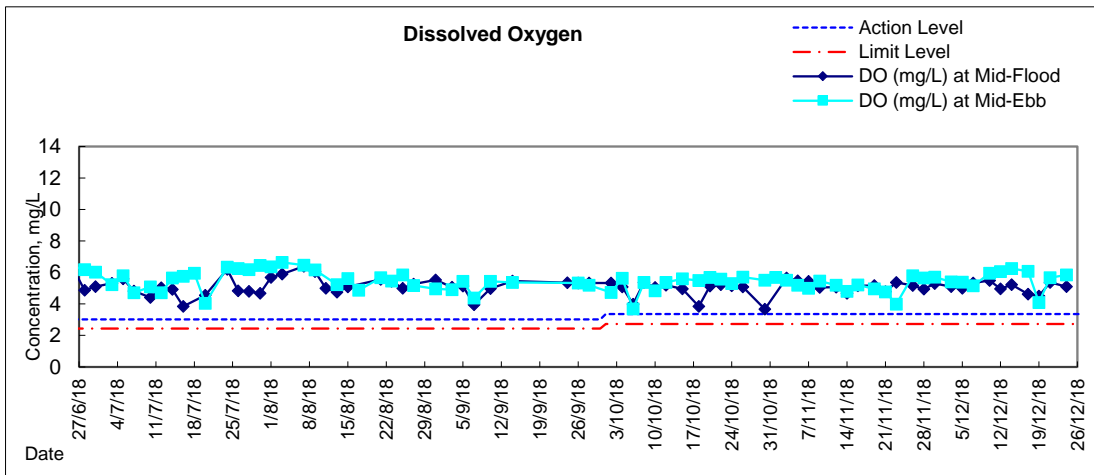


Graphic Presentation of Water Quality Result of C1 - HKCEC



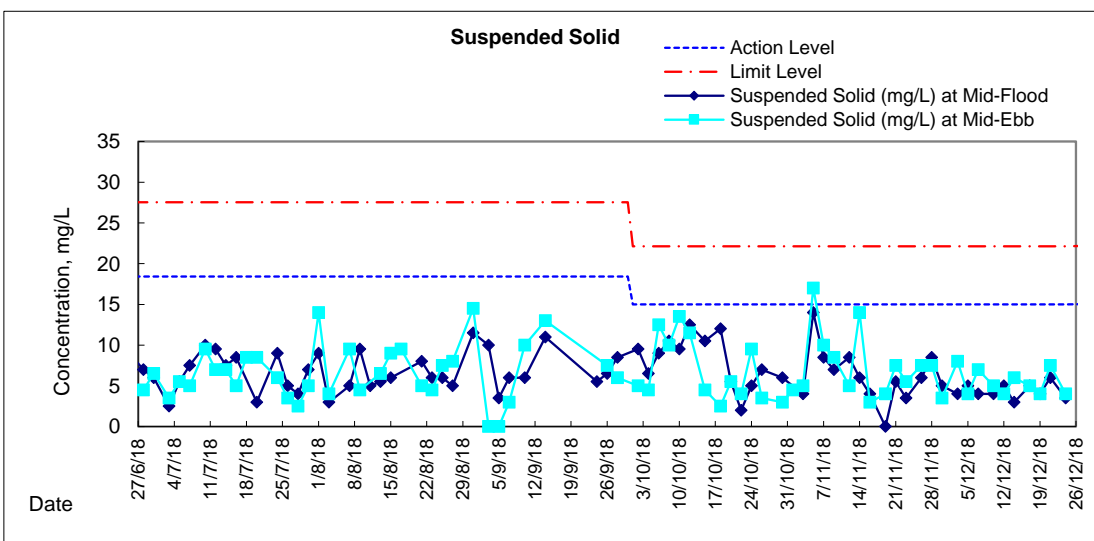
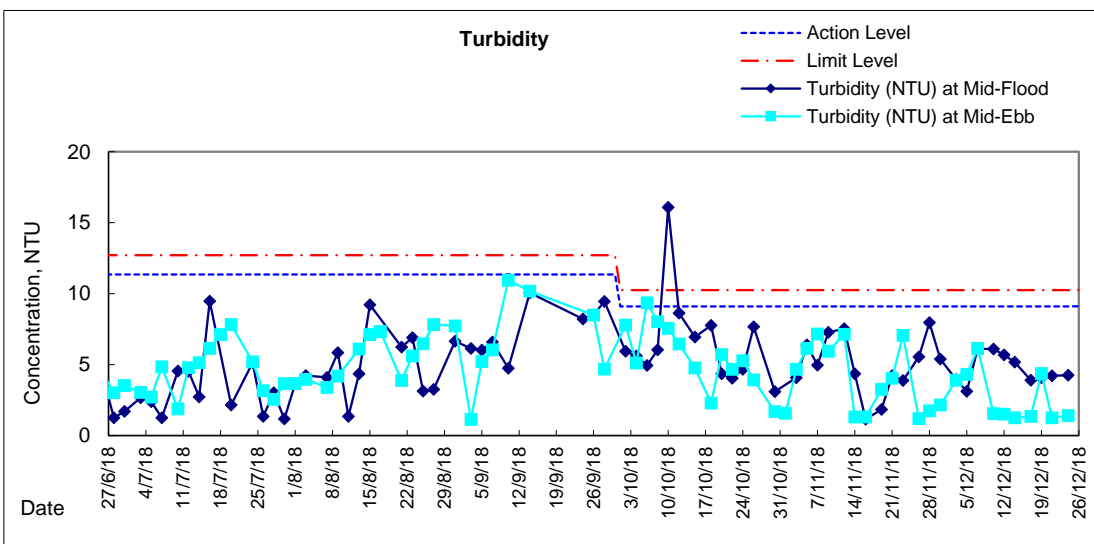
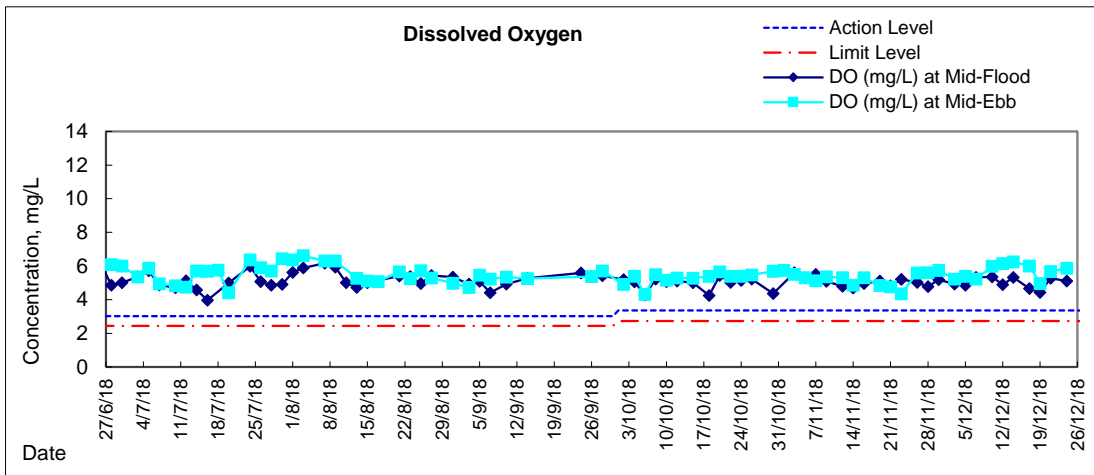


Graphic Presentation of Water Quality Result of P1 - HKCEC Phase I



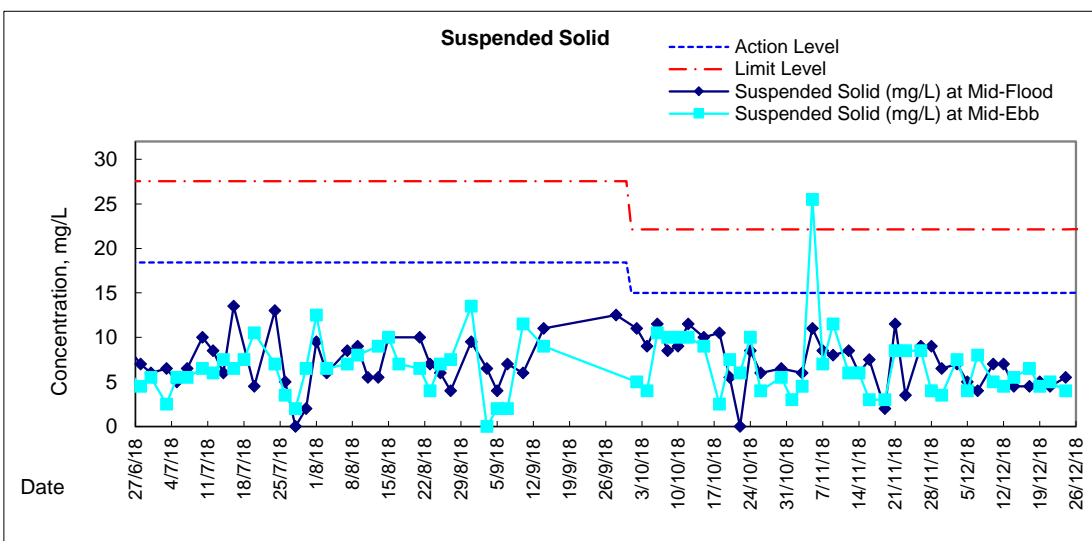
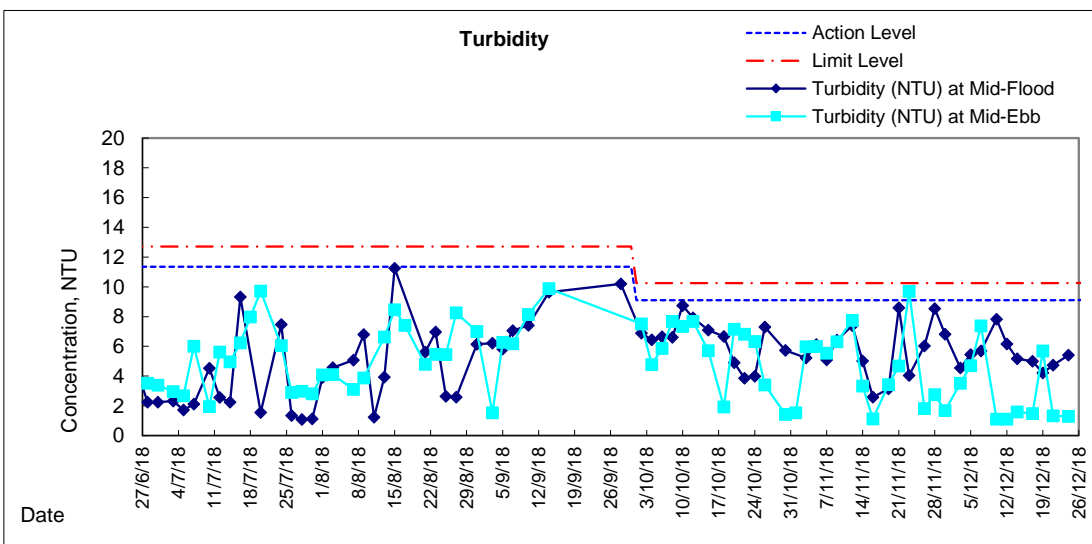
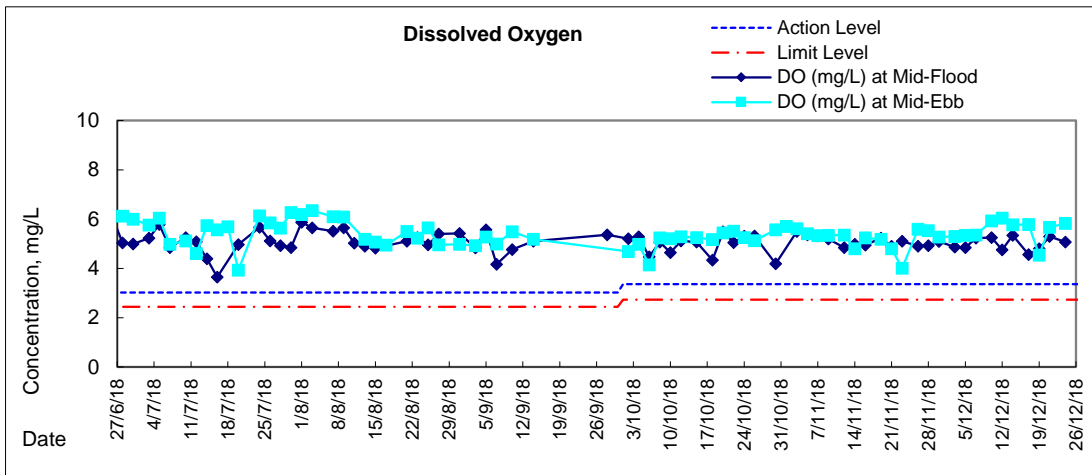


Graphic Presentation of Water Quality Result of P3 - APA



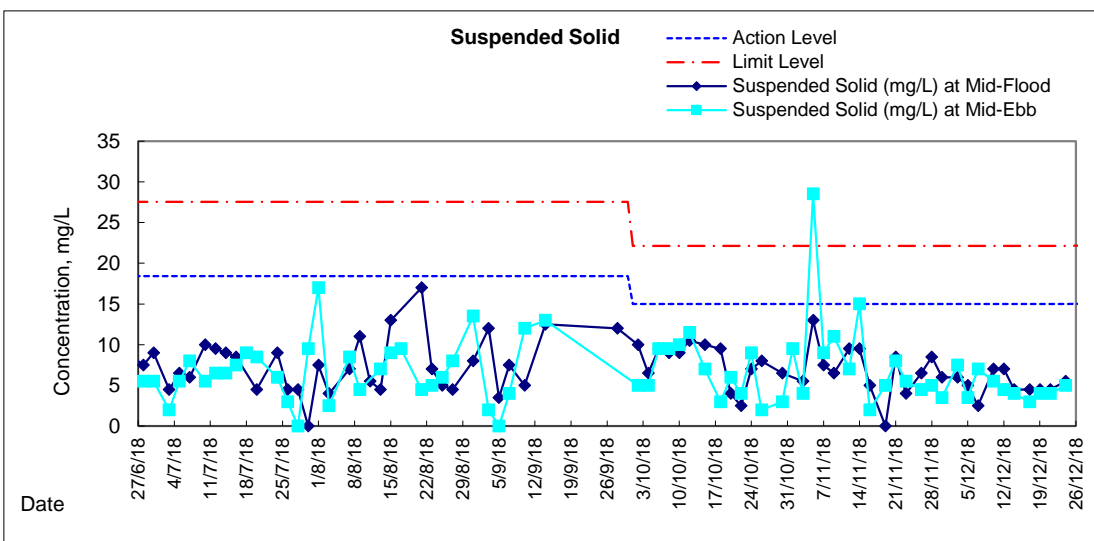
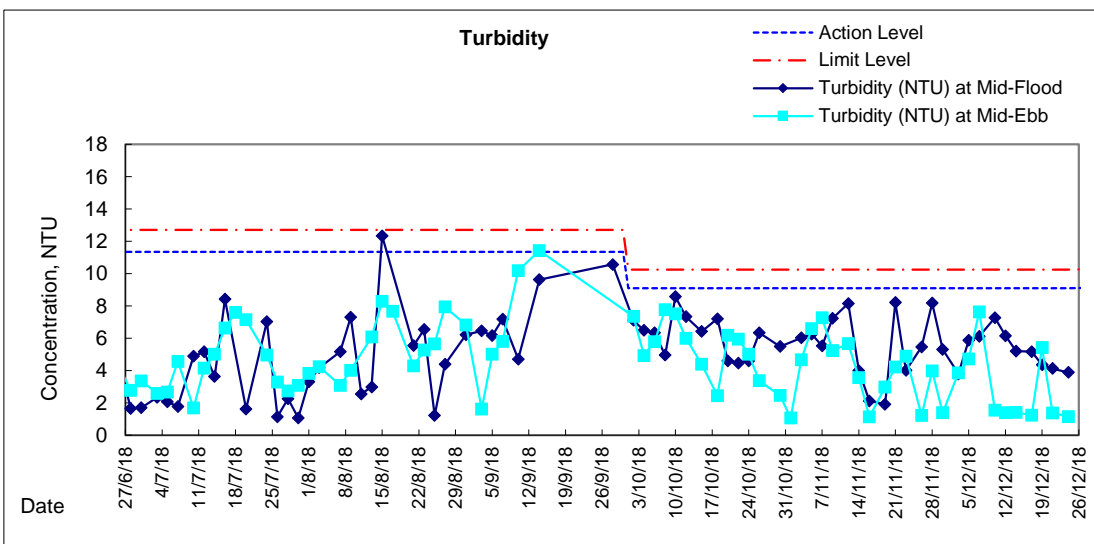
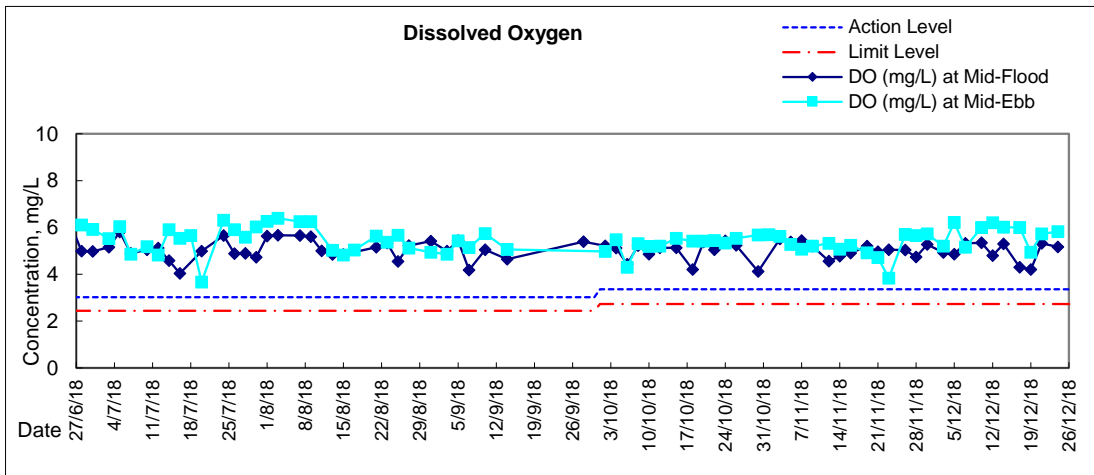


Graphic Presentation of Water Quality Result of P5 - WCT / RT / IT





Graphic Presentation of Water Quality Result of P4 - SOC





Graphic Presentation of Water Quality Result of RW21-P789 - GEC/CRC/SHK

